

Historic, Archive Document

Do not assume content reflects current scientific knowledge, policies, or practices.

62-73

LIBRARY
RECEIVED
★ AUG 31 1948 ★
U. S. Department of Agriculture

MICHELL'S BULBS & PLANTS

FALL 1948



Royal Dutch
TULIP COLLECTION
 Large-Cupped Varieties,
 Every Color Different

1. Princess Elizabeth
2. Golden Harvest
3. Insurpassable
4. Glacier
5. Campfire
6. The Bishop

3 Each—6 varieties,
 18 bulbs—\$2.50

6 Each—6 varieties,
 36 bulbs—\$4.50

12 Each—6 varieties,
 72 bulbs—\$8.50

Henry F. Michell Co.
516-518 Market Street

Philadelphia 5, Pa.

Michell's TOP NOTCH DAFFODILS
FOR AMERICA'S
BEST DRESSED GARDENS

Six individual varieties that will bring
early spring grace to your garden.

Top—Aerolite

Second Row—Twink, Bernardino

Bottom—Cresus, Diana Kasner, Magnificence

3 each—6 varieties, 18 bulbs	\$ 3.25
6 each—6 varieties, 36 bulbs	6.25
12 each—6 varieties, 72 bulbs	12.00



SPECIAL TELEPHONE SERVICE LOMBARD 3-5620 to 3-5629. ORDERS WILL GET PROMPT, COURTEOUS ATTENTION

MICHELL'S GREEN VELVET GRASS SEED - ONE OF THE FINEST AND MOST PERMANENT GRASSES FOR THE LAWN.

SEE NEW NOVELTIES IN FLOWER SEEDS.

Customers

please note
to avoid misunderstanding
read these conditions
of sale

Special Telephone Service



Bell:

Lombard 3-5620 to 3-5629

Telephone Your Order . . .
it will get prompt, courteous
attention here.

LOCAL DELIVERY

Our free delivery service covers the suburban Philadelphia area. The limits are: PAOLI, RIDLEY PARK, CHESTNUT HILL, WILLOW GROVE, ABINGTON, RYDAL, SOMERTON, SPRINGFIELD, MORTON, and intermediate points, but we do not guarantee to maintain a daily delivery to these places.

SPECIAL ATTENTION

To our customers in New Jersey:

Due to the curtailment of motor transportation and other conditions beyond our control, we are unable to make free deliveries to Camden and vicinity.

Shipment of goods can also be made by package service from Market and Chestnut Street Ferries, Broad Street Station, Reading Terminal, and B. & O. R. R., at 24th and Chestnut Streets. The tariff for shipments that can be made by this method on merchandise they will receive packed in one piece is as follows:

10 lbs. and under, 12c 26 lbs. to 40 lbs., 24c
11 lbs. to 25 lbs., 18c 41 lbs. to 50 lbs., 30c

Shipments weighing more cannot be sent via Package Service

ORDER EARLY

We would greatly appreciate it if you would send orders for seeds, plants, bulbs, etc., during January and February whenever possible. Shipments will be made when you want the goods.

GIFT CERTIFICATES

"Michell's Gift Certificate" available in any amount and redeemable at any time for our merchandise, which will make unusual gifts for your garden-loving friends. They are ideal for Christmas, birthday and other remembrances.

WE WELCOME CHARGE ACCOUNTS

We invite you to take advantage of the convenience of a charge account with us. So that no time will be lost in executing your first order, please send us the names of two or more business houses with whom you have had past or present credit relations.

HAVE YOU MOVED?

Please let us know of any permanent change of address so that you may receive our catalogs regularly.

CUSTOMERS' SERVICE

We endeavor at all times to take care of our customers' requirements. However, due to present conditions, we are not always able to supply just the item you want. We ask your permission to substitute a similar variety, when the supply of the variety ordered is exhausted. In this event we feel sure that we can render satisfactory service.

SHIPPING INSTRUCTIONS

Always state by what method you want goods forwarded; otherwise we ship according to our best judgment.

PACKING CHARGES

No charge is made for boxes, packing, or bags, except for two-bushel seamless sacks, which are returnable for credit at the market price as charged.

C. O. D. SHIPMENTS

Goods can be sent C.O.D. with the exception of perishable items: plants and cold-storage bulbs.

If shipment is requested by express or freight, send a partial remittance with the order.

No C.O.D. orders accepted for less than \$1.00.

CONDITIONS OF SALE

All contracts, sales, and acknowledgements of orders are contingent upon crop failure, our ability to import and make deliveries in conformity with the "Plant Quarantine Act," partial deliveries by growers or manufacturers, strikes, or other unavoidable causes beyond our control, clerical errors included; also unsatisfactory credit standing. All quotations are subject to market changes and goods being unsold on receipt of order.

"In accord with the disclaimer adopted by the American Seed Trade Association, the Henry F. Michell Co. gives no warranty, express or implied, as to the productiveness of any seeds, or bulbs it sells and will not be in any way responsible for the crop. Our liability, in all instances, is limited to the purchase price of the seeds or bulbs."

FORWARDING SERVICE

We pay postage charges on all orders for Vegetable Seeds, Flower Seeds, and Grass Seeds in quantities up to 5 pounds (unless otherwise noted) to the First and Second Zones. If larger quantities of the above, also Bulbs, Plants, and Sundries, are wanted by Parcel Post, remit for postage the amount named in connection with the item to the First and Second Zones; for other Zones add additional postage or at the rate quoted in table below.

All Plants, Roots, and Bulbs are forwarded by Express (or Parcel Post when possible), purchaser paying charges, unless otherwise noted.

For those of our customers who prefer to receive such goods by Parcel Post, we will be pleased to forward in this manner such plants as can be sent in this way at the following additional cost, which must be added to the value of each order for Plants, Roots, or Bulbs unless otherwise noted.

To all points east of the Mississippi River, add 10 per cent to cover postage and packing charges; to all points west of the Mississippi River, add 15 per cent.

SAFE ARRIVAL. We guarantee the safe arrival of all goods sent to points within the United States except when shipped to points where there is no Express or Freight agent; to such points the purchaser must assume any claim for loss or damage.

PARCEL POST RATES from Philadelphia (Subject to Change)

United States Parcel Post Rates (Seeds, Plants and Bulbs Included) (Subject to Change)	First pound or fraction	Each additional pound or fraction	Packages must not exceed 100 inches (length and girth combined)
Local Rate, Philadelphia	\$0.08	\$0.01	Limit of weight
1st Zone, within 50 miles of Philadelphia09	.01	to all zones, 70
2d Zone, over 50 and under 150 miles09	.01	lbs. A fraction
3d Zone, over 150 and under 300 miles10	.02	of a cent in the
4th Zone, over 300 and under 600 miles11	.04	total amount of
5th Zone, over 600 and under 1000 miles12	.06	postage on any
6th Zone, over 1000 and under 1400 miles13	.08	parcel shall be
7th Zone, over 1400 and under 1800 miles15	.10	counted as a
8th Zone, over 1800 miles16	.12	full cent.

On Seeds, Bulbs, Plants, or Roots not exceeding eight (8) ounces in weight, the postage charge is 1c for each two (2) ounces or fraction thereof; on Sundries or other Merchandise not exceeding eight (8) ounces in weight, the postage charge is 1½c for each two (2) ounces or fraction thereof. Seeds, Bulbs, Plants, Roots, Sundries, etc., weighing over eight (8) ounces are sent at zone rates.

If Special Delivery is wanted, an additional 17c is required on packages weighing up to two (2) pounds—25c on packages weighing more than two (2) pounds and up to ten (10) pounds—35c on packages weighing more than ten (10) pounds, which also includes special handling and transportation as first-class mail.

If remittance accompanies order, a sufficient amount should be included to cover the extra charges—if order to be sent by either of the methods as stated above.

PARCEL POST CHARGES QUOTED ARE FOR DELIVERY IN THE UNITED STATES ONLY

Notice to Customers in Canada and Other Countries Outside of the United States. In remitting for purchases at the time of ordering, or when paying accounts by reason of the exchange we ask that you please send Post Office Money Order in United States funds or a check or draft on a New York or Philadelphia Bank in par in United States funds.

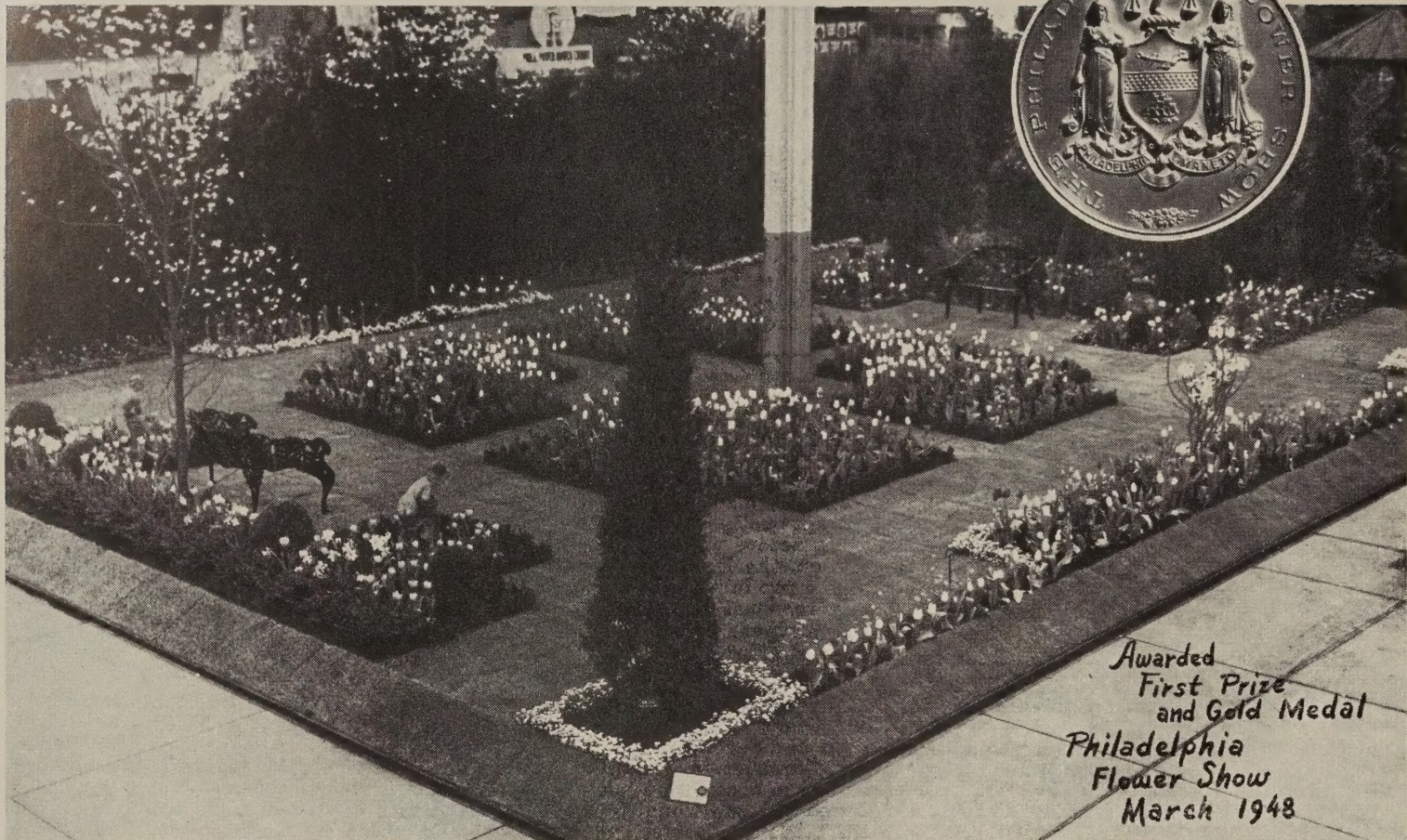
HENRY F. MICHELL CO.

516-518 Market Street

PHILADELPHIA 5, PA.

WAREHOUSES: 509-11-13 Ludlow St. and American and Dauphin Sts.

Formal Spring Garden by Henry F. Michell Co.



Michell's Dependable Dutch Tulips

In Modern Gardens Are Superb for Color, Size and Dependability

The asterisk (*) preceding the variety denotes that it is suitable for forcing as well as bedding. The letters E, F, G and H, following the variety, indicate their relative time of blooming, the E's being the earliest to bloom. The figures indicate the normal height in inches.

If Tulip bulbs are wanted by Parcel Post, add 25c per 100 for postage to the first and second zones.

SUPERB LARGE-FLOWERING DARWINS — Plant this Fall

- ***ALLARD PIERSON.** E26. Dark crimson-maroon. An early forcing variety. Doz., \$1.50; 100, \$10.00.
- ALL BRIGHT.** F25. Carmine-red, edged light blood-red, blue base. Petals shaded purplish red on outside. Sport of Bartigon. Doz., \$1.50; 100, \$10.00.
- ***BARTIGON.** F24. Fiery red, with pure white base. A very showy variety. Doz., \$1.50; 100, \$10.00.
- BLEU AIMABLE.** F25. Lavender with white base, starred blue. Distinct in shape. Doz., \$1.75; 100, \$12.00.
- CAMPFIRE.** F24. Bright cochineal-red. Recommended instead of Bartigon, as it has a much better color. Doz., \$1.50; 100, \$10.00.
- ***CITY OF HAARLEM.** F27. One of the best scarlet varieties, having steel-blue base with white outline. Fine for bedding or forcing in pots. Flowers large, on strong stems. Doz., \$1.75; 100, \$12.00.
- ***CLARA BUTT.** G21. Delicate salmon-pink, of perfect shape. Good bedder and forcer. Doz., \$1.75; 100, \$12.00.
- DUKE OF WELLINGTON.** F26. Outstanding pure white flower of perfect form with cream anthers and base. Flowers are carried on a stiff stem and are of lasting quality. Doz., \$1.75; 100, \$12.00.
- ***FARNCOMBE SANDERS.** F25. Giant, brilliant scarlet flowers with a clear white base. Very showy. A good forcer. Doz., \$1.50; 100, \$11.00.
- GLACIER (Wildlust).** F28. A giant among white Tulips. White base and anthers. An oval-shaped flower of strong substance on straight stems. A good forcer. Doz., \$2.00; 100, \$14.00.
- GOLDEN AGE.** F24. Bright golden orange with a lighter shade inside. Large flower; straight stem. Recommended for exhibition purposes. Doz., \$1.50; 100, \$11.00.
- INSURPASSABLE.** F28. A mammoth orchid colored Tulip. Lilac-mauve ribbed with white. Tall, strong stems. Highly recommended. Doz., \$1.75; 100, \$12.00.
- KING GEORGE V.** F25. Salmon-scarlet shaded rose; blue base. An excellent bedder. Holds its color in the sun. Doz., \$1.75; 100, \$12.00.
- MADAME BUTTERFLY (Dreadnaught).** G28. A lovely pale mauve, shaded violet; white base with black anthers. Large, egg-shaped flower on tall, stiff stem. Doz., \$2.00; 100, \$14.00.
- NIPHETOS.** F28. Magnificent lemon-yellow paling to a pale ivory-yellow when fully grown; light base with yellow anthers. Petals are of remarkable texture and beautifully recurved. Doz., \$1.75; 100, \$12.00.
- ***PHILIP SNOWDEN.** F25. Light carmine-purple with lighter edge. Outer petals shaded amaranth, white center. Forcing qualities. Doz., \$1.50; 100, \$10.00.
- ***PRIDE OF HAARLEM.** F26. Brilliant rosy carmine flower of magnificent form and size. Unsurpassed for massing among shrubs or in borders. Doz., \$1.50; 100, \$11.00.
- PRIDE OF ZWANENBURG.** G29. Lovely bright pink, suffused with rose-red; white base and black anthers. Outstanding garden variety. Doz., \$1.75; 100, \$12.00.
- ***PRINCESS ELIZABETH.** F23. Large, clear pink flower, deepening with age. Makes a beautiful show planted in front of evergreens. Doz., \$1.50; 100, \$11.00.
- ***PRUNUS.** F25. A delightful rose-pink with white base. Large, strong flower. Excellent for forcing or the garden. Doz., \$1.50; 100, \$10.00.

MICHELL'S SUPERB LARGE-FLOWERING DARWINS

***QUEEN OF THE NIGHT.** F28. Extremely dark velvet maroon with bright velvety sheen. Medium large flower. Darkest Tulip ever introduced. Doz. \$2.00; 100, \$14.00.

ROSE COPELAND. F25. A sport of the very popular Wm. Copeland. It is a beautiful shade of soft rose-pink. Doz., \$1.50; 100, \$10.00.

SCOTCH LASSIE. F26. Deep lavender-purple, much darker inside; dark blue base. An outstanding variety with slightly reflexing petals. Excellent for cutting. Doz., \$2.00; 100, \$14.00.

THE BISHOP. F30. Excellent for beds or borders, or for forcing in pots. Deep violet, center white, edged with blue; anthers black. A large bowl-like flower of very artistic coloring. Doz., \$2.00; 100, \$14.00.

VICTOIRE D' OLIVEIRA. F26. Dark red with white bordered deep blue base. Good for forcing as well as planting outside. Doz., \$1.50; 100, \$10.00.

***WHITE GIANT.** F30. A pure white Tulip of ideal form. Substantial flower petals, dark purple anthers on straight, tall stem. Blooms remain in fine condition longer than most varieties and color does not streak with age. Doz., \$2.00; 100, \$14.00.

***WILLIAM COPELAND.** E24. One of the best early forcing varieties. Grown indoors, the color is a beautiful delicate lavender; grown in the border, lilac-rose. Doz., \$1.50; 100, \$10.00.

***WILLIAM PITT.** E24. Dark crimson, shaded purple on outer petals. A large variety. Doz., \$1.50; 100, \$11.00.

YELLOW GIANT. E28. Large, globular, deep golden yellow flowers carried on tall, stiff stems. Excellent for garden or exhibition. Doz., \$1.75; 100, \$12.00.

ZWANENBURG. F28. A very beautiful flower of pure sparkling white, center marked with shining black anthers. The blooms have a spicy fragrance. Doz., \$1.75; 100, \$12.00.

MIXED. A well balanced assortment of colors and shades made from many named varieties and containing only giant-flowering, long-stemmed sorts. Doz., \$1.40; 100, \$10.00; 1000, \$95.00.

FINE DUTCH BREEDER TULIPS—Large-Flowering

Similar to the Darwins in their tall, strong growth, and flowering at the same time. They produce immense bloom on long, stiff stems, and in some instances are larger than the Darwins. Their artistic colors make them great favorites with those who desire to contrast their bronze, terra cotta, and buff shadings with the lighter colored sorts of the Darwins. They make a fine effect in hardy borders, and when used as a cut flower last a long while in water.

***PANORAMA (Fairy).** E24. Beautifully shaped, dull reddish brown flower with bronze shading. Very popular and good for early forcing. Doz., \$1.75; 100, \$12.00.

***TANTALUS.** F30. Large, cup-shaped flower of light yellow shaded dull purple. Good lasting qualities and recommended for forcing. Doz., \$2.00; 100, \$14.00.

PENELOPE. G32. Bronzy yellow, shaded violet edged golden bronze; yellow base. Extremely large, cup-shaped flower borne on a tall, straight stem. Doz., \$1.75; 100, \$12.00.

CHOICE MIXED COLORS. A choice mixture in a combination of the best colors and shades. Fine for cutting or display. Doz., \$1.50; 100, \$11.00.

If Tulip bulbs are wanted by Parcel Post, add 25c per 100 for postage to the first and second zones.

BACCHUS. F28. Dark violet-blue, base starred white. One of the best varieties to plant with bronze or light blue shades. Doz., \$1.75; 100, \$12.00.

CHERBOURG. F30. Old gold shaded light bronze. Fine egg-shaped Tulip on a strong stem. A favorite in the garden. Doz., \$2.00; 100, \$14.00.

DILLENBURG. F28. A brilliant salmon-orange, shaded rose. The flower is large and borne on a strong, stiff stem. Recommended for the garden. Doz., \$1.75; 100, \$12.00.

INDIAN CHIEF. G32. Deep Indian red flushed purple and edged warm brown with age. Enormous flowers on long, stately stems. Very artistic and fine for exhibition purposes. Doz., \$2.00; 100, \$14.00.

JESSY. G32. Clear coffee-brown of a rather deep shade, flushed bronzy red; distinct yellow base. Highly recommended. Doz., \$1.75; 100, \$12.00.

LOUIS XIV. G28. Dark purple, flushed bronze, with broad margin of golden brown. A unique variety of striking beauty. Enormous flowers on strong stems. Doz., \$2.00; 100, \$14.00.

MOROCCO BEAUTY. F26. Clear morocco-red, interior dark reddish mahogany; yellowish base. An outstanding novelty. Doz., \$2.00; 100, \$14.00.



Michell's Tulips

MAY-FLOWERING or COTTAGE TULIPS

***ALBINO.** F25. Pure white, graceful flowers. Highly recommended for forcing. Doz., \$2.00; 100, \$14.00.

ADVANCE. E28. A glorious orange-scarlet Tulip of tremendous size on strong, tall stems; center is glittering black. Recommended. Doz., \$1.75; 100, \$12.00.

BELLE JAUNE. G26. Beautiful golden yellow with a bright yellow interior; light base with yellow anthers. An excellent bedding variety. Large, long flower on stiff, straight stem. Doz., \$1.50; 100, \$11.00.

CARRARA. F26. Graceful, pure white flowers which are round, cup-shaped and large, with broad petals. Excellent for forcing in pans. Perfect form, purity, and long-lasting qualities. Doz., \$1.75; 100, \$12.00.

GOOD GRACIOUS. G25. A blending of pink, salmon, orange and yellow; giving the general effect of pale apricot; yellow base. This Tulip was named by one of the greatest Tulip fanciers of Europe. Doz., \$2.00; 100, \$14.00.

***GOLDEN HARVEST.** E26. Large, globular, bright lemon-yellow flowers of great substance on tall, stiff stems. May be forced. Doz., \$1.50; 100, \$10.00.

G. W. LEAK. G26. Glowing orange-red, green and pale yellow base. Large flowers on tall, straight stems. Outstanding. Doz., \$2.00; 100, \$14.00.

***INGLESCOMBE YELLOW.** F20. Is often called the "Yellow Darwin." Flowers are beautifully formed. Doz., \$1.50; 100, \$11.00.

MARSHALL HAIG. F26. Brilliant scarlet with glittering red interior; yellow base. A garden favorite. Large flower. Doz., \$1.75; 100, \$12.00.

MONGOLIA. G28. Enormous, globular, soft yellow flower of great beauty. Late flowering. Highly recommended for all purposes. Doz., \$1.75; 100, \$12.00.

MOTHER'S DAY (Lemon Queen). G26. Soft lemon-yellow Tulip; excellent for bedding purposes. Also good for late forcing. Doz., \$1.50; 100, \$11.00.

MRS. JOHN T. SCHEEPERS. G26. Clear chrome-yellow; erect, tall stem. Enormous oblong flower of vigorous growth. Doz., \$1.75; 100, \$12.00.

***OSSI OSWALDA.** F24. Opening creamy white delicately flushed rose. An exceptionally beautiful variety which, when fully developed, is a clear rose shade. Doz., \$1.75; 100, \$12.00.

ROSABELLA. G24. Beautiful carmine-rose, broad white edge, inside flesh-pink with creamy white center. Excellent for the garden. Flowers are shaped like rosebuds. Doz., \$1.75; 100, \$12.00.

MIXED COLORS. A lovely mixture, covering almost every color and shade. Gives a superb display if planted in masses, groups, or clumps. Doz., \$1.50; 100, \$11.00; 1000, \$100.00.

SINGLE EARLY TULIPS

The Early Single Tulips bloom a long time before the Late Tulips begin to show color and give the garden a glorious range of soft and brilliant colors early in spring, a time when this will be best appreciated. They mature quickly after flowering, so that the bulbs can be lifted early and the space planted again with summer plants. The asterisk (*) preceding the name of a variety denotes that it is suitable for forcing as well as bedding. The letters, A, B, and C, following the name indicate their relative earliness to bloom, the A's being the earliest, followed by the B's and later by the C's. Figures indicate the normal height in inches.

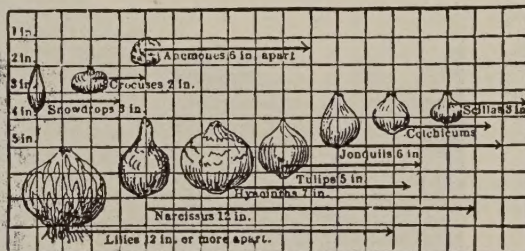
***BRILLIANT STAR.** A12. Very large, vermilion-scarlet flower. Highly recommended for early forcing. Doz., \$1.50; 100, \$10.00.

***COULEUR CARDINAL.** C10. Bright scarlet. Very attractive variety. Fine for late forcing or bedding. Doz., \$1.50; 100, \$11.00.

***DE WET (Fireglow).** B16. Beautiful golden yellow flowers flushed and stippled fiery orange. Outstanding as a forcing variety. Doz., \$1.50; 100, \$11.00.

***IBIS.** B12. Very large, dark brilliant pink flowers. Extra early for forcing. Also recommended for bedding. Doz., \$1.75; 100, \$12.00.

***KEIZERSKROON.** B15. Brilliant red with gold border. Extra large, on long stems. Doz., \$1.75; 100, \$12.00.



Planting Diagram

***ROSE LUISANTE.** C10. Large, deep rose-pink flowers. Excellent for forcing or bedding. Doz., \$1.75; 100, \$12.00.

***VERMILION BRILLIANT.** B10. Brilliant vermilion-scarlet. Extremely early forcer. Doz., \$2.00; 100, \$14.00.

***WHITE HAWK (Albion).** A12. Large, globe-shaped, pure white flowers. Excellent early forcer and bedder. Doz., \$1.50; 100, \$10.00.

***YELLOW PRINCE.** B10. Golden yellow. Fine for either bedding or forcing. Doz., \$1.50; 100, \$10.00.

SINGLE EARLY TULIPS IN MIXTURE. Our mixtures of Tulips have long been noted for their brilliancy, proper blending and variety of colors. Doz., \$1.50; 100, \$11.00.

BOTANICAL OR SPECIES TULIPS

These Tulips are particularly adapted for rock gardens or borders. They show their bright colors early in the season and have graceful, recurving petals. For the most striking effects, plant in masses or clumps.

CLUSIANA (Lady or Candystick Tulip). Outer petals cherry-red, inner petals creamy white with violet base. Very choice for massing in front of evergreens. Height 8 inches. Doz., \$1.50; 100, \$10.00.

DASYSTEMON. Canary-yellow and white, blooming with several flowers on a stem. A gem for the rock garden. Height 5 inches. Doz., \$1.75; 100, \$12.00.

Six or twelve bulbs of each variety of Botanical Tulips, set close together, produce the best effect.

EICHLERI. Crimson-scarlet shaded orange, with black center marked with gold. Height 9 inches. Doz., \$1.50; 100, \$10.00.

FOSTERIANA, RED EMPEROR (Mad. Lefeber). A glorious scarlet-red Tulip of remarkable size and substance. Large black center with a yellow border. Height 18 inches. Doz., \$2.00; 100, \$14.00.

KAUFMANNIANA. Blooms early in April. Flowers creamy white tinged carmine. Wonderful effects may be had if planted under trees or naturalized in shady places. Height 5 to 7 inches. Doz., \$1.50; 100, \$10.00.

MARJOLETTI. Soft primrose, shaded carmine-red at base. Blooms early in April. Height 12 inches. Doz., \$1.75; 100, \$12.00.

MIXED. Doz., \$1.50; 100, \$11.00.

MICHELL'S DOUBLE EARLY TULIPS

Excellent for bedding and forcing. Plant in groups of 12 or more for best results.

The Double Tulips usually flower a few days later than the Single Early varieties. They are very popular for bedding and a number of the varieties are also excellent for forcing.

- ***BOULE DE NEIGE** (Purity). B10. Large, pure white flowers, resembling a Peony in form. Excellent for bedding or forcing. Doz., \$1.75; 100, \$12.00.
- ***ELECTRA**. B12. Enormous, rosy violet-red flowers. Doz., \$1.75; 100, \$12.00.
- ***MR. VAN DER HOEF** (Yellow Murillo). A10. A pure golden yellow sport of Murillo. Doz., \$1.75; 100, \$12.00.
- ***MURILLO**. B10. Delicate rose-pink. One of the best forcers. Still very popular. Doz., \$1.50; 100, \$11.00.
- ORANGE NASSAU**. B12. Bright orange-scarlet, margined orange, outer petals shaded cherry-red. Doz., \$1.50; 100, \$11.00.
- ***PEACH BLOSSOM**. B12. Bright rose-pink, flushed white, deepening to carmine-rose with age. Doz., \$1.75; 100, \$12.00.
- ***SCARLET CARDINAL**. F10. Very large dazzling scarlet. Without question, the best in its color. Very early. Doz., \$2.00; 100, \$14.00.
- ***VUURBAAK**. B12. Brilliant orange-scarlet. For forcing or bedding. Produces large flowers. Doz., \$1.75; 100, \$12.00.

DOUBLE MIXED TULIPS

SUPERFINE QUALITY. A choice mixture of many colors and shades, from named sorts. Doz., \$1.50; 100, \$11.00.

TRIUMPH TULIPS

Triumph Tulips are the result of crossing Early Single and Darwin Tulips, recommended for borders; stems very strong. They flower earlier than Darwins.

- ALBERIO**. Cherry-red; yellow edge. Early. Height 24 inches. Doz., \$1.50; 100, \$10.00.
- ***CRATER**. Dark vermilion-red, edging lighter; dark center. Height 20 in. Doz., \$1.50; 100, \$10.00.
- ELIZABETH EVERS**. Aniline-red, shaded silvery rose; base white. Height 22 inches. Doz., \$1.50; 100, \$11.00.
- KANSAS**. Snow-white, lemon-yellow center, with white anthers. Height 22 inches. Doz., \$1.50; 100, \$11.00.
- LORD CARNARVON**. Lavender-pink and white, with white edge. Height 22 inches. Doz., \$1.50; 100, \$10.00.
- URSA MINOR**. Beautiful golden yellow. Height 18 inches. Doz., \$1.75; 100, \$12.00.

PARROT TULIPS

These belong to the late-flowering class and on account of their peculiar markings and shadings are much in demand. The petals have feathered edges, and in addition to other colors combine shades of green.

- BLUE PARROT**. Bright violet and mauve, tinted bronze outside; inside purple shaded steel-blue. Enormous flower borne on strong, stiff stem. A general favorite. Doz., \$2.00; 100, \$14.00.
- FANTASY**. A sport from the Darwin Tulip Clara Butt. True salmon-rose, with ragged edges and fantastically shaped petals; the outer sides of the petals marked apple-green. Stiff, upright stems. Doz., \$2.00; 100, \$14.00.
- ORANGE FAVORITE**. Bright orange green blotches, yellow base. Highly recommended. Height 22 inches. Very fragrant. Doz., \$2.50; 100, \$16.00.
- THERESE** (Caprice). Bright cochineal-carmine, inside vivid cerise-scarlet, white center, tinted blue. Outer petals marked parrot green. Tall stem. Doz., \$2.50; 100, \$16.00.
- VIOLET QUEEN**. A beautiful soft violet, flushed lavender, with very deeply cut petals. Outer petals strongly marked bronzy green. White markings in the centers are quite attractive. A Parrot Tulip of remarkable size carried on a tall, strong stem. Doz., \$2.00; 100, \$14.00.

Michell's Sweet-Scented Hyacinths

CULTURAL DIRECTIONS FOR HYACINTHS

Outdoor Culture: Plant in October and November, in good, well drained garden soil. Plant bulbs so that the top will be 3 to 4 inches below the surface and 6 to 8 inches apart. After the ground has frozen, cover with litter, leaves, or manure, to protect them from frost; this should be removed in spring when danger from hard frost is past.

Pot Culture: Plant any time from September to December, using a 4- or 5-inch pot for single bulbs or several bulbs may be planted in a larger pot or bulb pan. After planting, water well and put in a cool, dark, airy place until well rooted, after which remove to a cool room and later to a warmer room.

As there is a slight variation as to time of blooming of the various sorts, we have indicated their relative time of flowering by letters following the name of the variety, the A's being the earliest, the D's the latest.

Single Scarlet Shades

- JAN BOS**. A. Carmine-red tinted scarlet; lighter center. Good stem and flower. Recommended.
- LA VICTOIRE**. A. One of the finest red varieties, maintaining its brilliant scarlet color. Unsurpassed for bedding or forcing. Should be in every collection.

Single White Shades

- ARENTINE ARENSEN**. A. Snow-white; wide opening bells on a broad, compact spike. Extra fine for forcing.
- L'INNOCENCE**. A. Pure white. Excellent forcer and choice for bedding. Extra fine truss with large bells.
- QUEEN OF THE WHITES**. C. Pure white. Strong spike; large bells. Good for late forcing and excellent for bedding.

PRICES—ALL VARIETIES			
	3 for	Doz.	100
Top-size bulbs	\$1.25	\$4.50	\$35.00
First-size bulbs	1.00	3.50	27.50
Second-size bulbs	.75	3.00	22.50
Third-size bulbs		2.75	20.00
Miniature bulbs		2.25	17.50



Single Pink and Rose Shades

- GERTRUDE**. A. Deep rose-pink. Excellent for forcing and bedding. Large, well filled truss.
- LADY DERBY**. A. Clear rose-pink. An excellent forcer and very fine for bedding, due to its strong stem.
- MARCONI**. B. A handsome spike of rich rose-pink, center flushed white. Bells of great substance. Fine for early or late forcing.
- QUEEN OF THE PINKS**. C. Bright rose-pink; large spike and good sized bells on a sturdy stem. The ideal variety for late forcing and also excellent for bedding.

Single Blue Shades

- BISMARCK**. A. Large, sky-blue flowers on long stems. Excellent for early forcing and good for bedding.
- GRAND MAITRE**. B. Large, deep porcelain-blue bells in very long, well filled truss.
- KING OF THE BLUES**. D. Deep dark blue. A fine, compact truss. For late forcing and for bedding.
- MYOSOTIS**. C. Light clear blue. One of the best.

Single Yellow and Orange Shades

- CITY OF HAARLEM**. C. Well formed, pure golden yellow bells on good spikes. Valuable for exhibition purposes and excellent for the garden.
- PRINCE HENRY**. A. Clear yellow; good forcing and bedding variety.

The Multi-Flowered French Roman Hyacinths

French Roman Hyacinths afford a continuous supply of bloom from early winter until late in spring if planted in succession. They are very fragrant.

Easily grown in pots or pans, and if bulbs are potted in September, the pots plunged in the open ground for a month, until well rooted, and then brought in the house, they can be had in flower in November or December, and a continuous supply of flowers may be had by bringing in a few pots or pans at intervals of about two weeks. The bulbs should be planted quite close together; a 6-inch pot or pan will be sufficiently large for six bulbs. They are not hardy and are not suitable for outdoor planting.

	3 for	Doz.	100
WHITE. Extra-select bulbs	\$0.90	\$3.25	\$22.50
Mammoth bulbs..	1.00	3.50	27.50
LIGHT BLUE90	3.25	22.50
LIGHT PINK	1.00	3.50	25.00

Medium Trumpet Varieties

ALCIDA. (Barri.) B15. Giant flower with creamy, star-shaped perianth, opening flat, and broad citron-yellow cup with blood-orange frill. 3 for 75c; doz., \$2.25; 100, \$16.00.

BERNARDINO. (Incomparabilis.) B15. Large, creamy perianth; cup widely expanded and frilled, stained deep orange and apricot. A superb variety. 3 for 60c; doz., \$2.00; 100, \$15.00.

CROESUS. (Incomparabilis.) A20. Perianth is primrose-yellow, with thick, overlapping petals; an unusually large and widely expanded crown of deep orange-red. 3 for 60c; doz., \$2.00; 100, \$14.00.

DIANA KASNER. (Barri.) B18. Pure white perianth; large fluted yellow cup, with blood-red frill. 3 for 50c; doz., \$1.75; 100, \$12.00.

FIRETAIL. (Barri.) B. Broad, creamy white perianth of firm texture; flat crown of brilliant crimson-scarlet. An outstanding red-cupped variety. 3 for 85c; doz., \$3.00; 100, \$20.00.

HELIOS. (Incomparabilis.) Deep golden yellow perianth, semi-overlapping; the cup opens a little darker than the petals and in a cool climate gradually changes to light orange. 3 for 75c; doz., \$2.25; 100, \$15.00.

JOHN EVELYN. (Incomparabilis.) B16. White perianth with wide-open, apricot colored cup. 3 for 85c; doz., \$3.00; 100, \$22.50.

LORD KITCHENER. (Leedsi.) B16. A beautiful flower with broad white perianth, large primrose crown. 3 for 60c; doz., \$2.00; 100, \$15.00.

RED CROSS. (Incomparabilis.) A large, strong flower, opening flat; primrose-yellow perianth and deep, densely frilled, dark orange cup. Very showy. 3 for \$1.00; doz., \$3.25; 100, \$22.50.

SIR WATKIN. (Incomparabilis.) C15. Perianth sulphur-yellow; cup tinged with orange. 3 for 60c; doz., \$2.00; 100, \$14.00.

YELLOW POPPY. (Incomparabilis.) Overlapping primrose-yellow perianth and expanded shallow cup of bright yellow edged orange. 3 for 60c; doz., \$2.00; 100, \$15.00.

Narcissus-Daffodils

For best effects allow six bulbs for each square foot of planting area.

Giant Trumpet Varieties

AEROLITE. B15. A huge golden Daffodil, beautifully proportioned, with deep primrose perianth and pure medium yellow trumpet. 3 for 75c; doz., \$2.25; 100, \$18.00.

BEN HUR. B15. A glorious Giant Trumpet, deeply frilled and of pure Roman gold. One of the best. 3 for \$1.00; doz., \$3.50; 100, \$25.00.

EMPEROR. C18. One of the best Narcissus, for either outdoors or indoors. Pale yellow trumpet; primrose perianth. Top-size bulbs. 3 for 75c; doz., \$2.25; 100, \$16.00.

FRANCISCA DRAKE. (Incomparabilis.) Pure white perianth petals tinted gold at the base, which shows through on the outside. Cup deep, wide, yellow (golden) at the base changing gradually to flame-orange at the densely frilled edge. 3 for 85c; doz., \$3.00; 100, \$22.50.

GLORY OF SASSENHEIM. B18. Beautiful large bicolor; perianth white; trumpet golden yellow. 3 for 75c; doz., \$2.25; 100, \$16.00.

KING ALFRED. B18. Intense golden yellow; trumpet large and open, with frilled edge. 3 for Doz. 100
First-size bulbs.. \$2.00 \$14.00
Top-size bulbs ... \$0.85 3.00 20.00
Jumbo bulbs 1.00 3.50 25.00



King Alfred

MINISTER TALMA. A18. Large, bright yellow open trumpet, deeply frilled and flanged at brim. 3 for 75c; doz., \$2.25; 100, \$15.00.

MRS. E. H. KRELAGE. B21. Often referred to as the "White King Alfred." Pure white perianth, creamy white trumpet. 3 for \$1.00; doz., \$3.50; 100, \$25.00.

REMBRANDT. A18. Pale golden yellow flower of perfect form. Very attractive. 3 for 85c; doz., \$3.00; 100, \$20.00.

SPRING GLORY. B16. An extra fine variety, with pure white perianth and a golden yellow trumpet. 3 for 75c; doz., \$2.00; 100, \$15.00.

THE FIRST. The earliest of all yellow Daffodils. Bold golden trumpet. Excellent for forcing. 3 for 75c; doz., \$2.25; 100, \$16.00.

MICHELL'S OUTSTANDING DAFFODILS

BEERSHEBA. Without question the largest and strongest white Narcissus. We recommend this variety for all purposes. Beautifully formed trumpet, nicely flanged at the mouth with perfectly flat perianth. 3 for \$1.00; doz., \$3.75; 100, \$27.50.

BATH'S FLAME. (Barri.) Deep primrose perianth, with long, broad petals; large, deep yellow cup with wide edge of orange-red. A flower of outstanding character and color. 3 for 85c; doz., \$3.00; 100, \$20.00.

FEBRUARY GOLD. (Cyclamineus Hybrid.) Perianth golden yellow; trumpet fringed, deep orange-yellow. Ideal for sheltered and shaded spots in the garden; also rock garden. 3 for 65c; doz., \$2.00; 100, \$15.00.

LOVENEST. (Bicolor.) One of the very few members of the "Pink Daffodil" class. Star-shaped perianth; trumpet saffron-yellow turning to apricot-pink. 3 for \$1.25; doz., \$4.50; 100, \$35.00.

MARY COPELAND. (Double.) The long petals are a pure creamy white with a golden ray down the center, interspersed with shorter petals of lemon and brilliant orange. One of the finest Doubles. 3 for \$1.25; doz., \$4.50; 100, \$35.00.

MAGNIFICENCE. A. Deep golden yellow trumpet. Good size flower on strong stem. One of the very earliest. 3 for 85c; doz., \$3.00; 100, \$20.00.

MRS. R. O. BACKHOUSE. (Leeds.) This is the famous Pink Daffodil. Ivory-white perianth, slim, long trumpet of apricot-pink, changing to shell-pink at edge. Highly recommended. 3 for \$1.25; doz., \$4.50; 100, \$35.00.



Mrs. R. O. Backhouse

ST. AGNES. (Tazetta Hybrid.) A beautiful Poetaz with very flat, rounded perianth, creamy white; the crown is flat, bright orange-scarlet. Two or more flowers on a stem. 3 for 85c; doz., \$3.00; 100, \$20.00.

TUNIS. (Leeds.) A large, tall, robust Leeds of lasting substance; broad waved white perianth and large bold ivory crown with serrated brim, retaining a flush of pale coppery gold at the edge. 3 for \$1.25; doz., \$4.50; 100, \$35.00.

Michell's Narcissus or Daffodils



Narcissus
Family
Types

Jonquil

Giant Trumpet

Double

Poetaz

Poeticus

NARCISSUS TRIANDRUS

MOONSHINE. Star-shaped creamy white flowers, often three to a stem, drooping gracefully. A great favorite especially when used for the rock garden or naturalizing in the shade. 3 for 85c; doz., \$3.00; 100, \$20.00.

THALIA. Orchid-flowered Narcissus. C15. Produces 3 or 4 blooms on sturdy stem; color is a gorgeous white and flowers are so arranged as to remind one of Orchids. 3 for \$1.00; doz., \$3.50; 100, \$25.00.

DOUBLE NARCISSUS

TWINK. A. A double of the semi-full type, the petals alternating a soft primrose and clear orange. 3 for 85c; doz., \$3.00; 100, \$20.00.

VON SION. C. The true double Daffodil. Pure golden yellow, entirely free from green-tipped flowers. Top-size bulbs. 3 for 60c; doz., \$2.00; 100, \$15.00.

JONQUILS, SWEET-SCENTED

GOLDEN SCEPTRE. 20. Large, golden yellow trumpet-shaped, very fragrant blooms. Doz., \$1.75; 100, \$12.00.

SINGLE. 12. Rich yellow; very fragrant. Free flowering and fine for cutting. Doz., \$1.50; 100, \$10.00.

DOUBLE. 12. Flowers very double, deep golden yellow, not quite as fragrant as the single, but of very graceful form. Doz., \$1.50; 100, \$10.00.

NARCISSUS POETICUS

(Poet's or Pheasant's-Eye Narcissus)
ACTAEA. The largest Poeticus Daffodil. Broad, snow-white perianth; very large eye, broadly margined with dark red. Doz., \$1.75; 100, \$12.00.

DANTE. A very attractive and desirable variety. White perianth with scarlet eye. Early flowering. Doz., \$1.75; 100, \$12.00.

HORACE. One of the best in the Poet's type. Perianth pure white, of large size; very conspicuous red eye. Doz., \$1.75; 100, \$12.00.

ORNATUS. C. Large, pure white flowers; saffron cup, margined scarlet. Mammoth bulbs, doz., \$1.75; 100, \$12.00.

GRAND SOLEIL D'OR

(Golden Chinese Lily)

Often called "Yellow Paper-White."
Rich yellow, with deep red cup.
Doz. 100
Mammoth bulbs \$1.50 \$10.00
Top-size bulbs 1.75 13.00
Jumbo bulbs 2.50 18.00

POLYANTHUS NARCISSUS

(Michell's Big Bloom Paper-White)

This is a pure white flowering sort, used extensively for forcing, as it can be brought into bloom in 8 weeks' time.
Doz. 100
Selected bulbs \$0.85 \$ 6.00
Mammoth bulbs 1.00 7.50
Top-size bulbs 1.25 8.50
Jumbo bulbs 1.50 10.00

NARCISSUS POETAZ

(Cluster-Flowered Narcissus)

ABUNDANCE. C. Creamy yellow; pure yellow cups. Very free flowering and an excellent cut flower. Doz., \$1.75; 100, \$12.50.

CHEERFULNESS. C. Excellent double-flowering type. A real double white with a faint suggestion of pale yellow at base. Doz., \$1.75; 100, \$12.00.

ELVIRA. Pure white with delicate yellow cup; fragrant. Two or three stems are produced from a single bulb, each having 3 or 4 blooms. Doz., \$1.75; 100, \$12.00.

LA FIANCEE. White perianth, bright orange cup. Very early. Several flowers on a stem. 3 for 60c; doz., \$2.00; 100, \$15.00.

LAURENS KOSTER. B. Flowers large; perianth pure white, with deep orange-yellow cup. Frequently 4 or 5 flowers are produced on a stem. Doz., \$1.75; 100, \$12.00.

ORANGE CUP. C. Creamy white; conspicuous orange cups—a most exquisite color combination. Doz., \$1.75; 100, \$12.00.

MATERIAL FOR SUCCESSFUL HOUSE CULTURE OF BULBS

	Qt.	4 Qts.	Pk.	Bu.
Bulb Fiber ...	\$0.15	\$0.45	\$0.75	\$2.00
Leaf-Mould ..	.15	.45	1.00	
Pearl Chips, White or Col- ored. 1-lb. pkg., 15c; 12 pkgs., \$1.50.				
Pebbles15	.50	1.00	
Potting Sand .	.15	.50		
Prepared Pot- ting Soil ..	.10	.30	.55	



Michell's Narcissus Mixture for Naturalizing

The cheery Narcissus, one of the loveliest of all spring flowers, is a truly worth-while investment. The bulbs increase readily and can be expected to bloom abundantly for many years. When the bulbs become crowded, dig them up and reset them. Michell's offer a wide variety of worth-while kinds. By selecting the various types you can enjoy several weeks of bloom.

Doz., \$1.25; 100, \$9.00; 1000, \$87.50.

Bulbs for Indoor and Outdoor Culture

ACONITE, WINTER

(Eranthis Hyemalis)

A very early spring-flowering bulb with golden yellow blooms. Prefers a moist, shady location. Perfectly hardy. Excellent for the rockery. Height about 6 inches. Doz., 50c; 100, \$4.00.

AMARYLLIS

GIANT AMERICAN HYBRIDS. The finest race of Amaryllis in cultivation, exceeding in the size and fine form of their flowers, as well as in the diversity of colors and markings, all former hybrids. We offer mixed colors only.

	Each	Doz.
Selected bulbs	\$0.50	\$5.50
Mammoth bulbs75	8.00
Top-size bulbs	1.00	10.00

ANEMONE - Windflower

BLUE POPPY. A choice selection of blue shades. Large, Poppy-shaped, thick-petaled blooms on long stems. Doz., \$1.00; 100, \$7.00.

DE CAEN. Single French varieties in mixed colors. Doz., \$1.00; 100, \$7.00.

HIS EXCELLENCY. Beautiful, large-flowering Poppy Anemone. Deep scarlet; thick petals; long stems. Doz., \$1.00; 100, \$7.00.

ST. BRIGID. Improved form with immense semi-double flowers in many colors. Doz., \$1.00; 100, \$7.00.

SYLPHIDE. A beautiful clear pink. Doz., \$1.00; 100, \$7.00.

THE BRIDE. Large, pure white flowers with white centers. Doz., \$1.00; 100, \$7.00.

MICHELL'S SUPERB TUBEROUS-ROOTED BEGONIAS

Our strain is the finest grown. The enormous flowers are of the most exquisite coloring and are produced in great abundance. These can be grown in porch or window boxes, or in the garden in semi-shady places; can be started in pots indoors very easily. Plant outdoors in May, in a light, well drained soil where they will flower uninterruptedly from latter part of June till frost. Ready January-February.

Single Crispa Frilled Begonias

(Large Bulbs)

ORANGE
PINK, ROSE
SALMON
SCARLET
WHITE
YELLOW

Price of Above:

Each 30c; doz., \$3.25; 100, \$25.00.

Double Camellia-Flowered Begonias

(Large Bulbs)

ORANGE
PINK, ROSE
SALMON
SCARLET
WHITE
YELLOW

Price of Above:

Each 30c; doz., \$3.25; 100, \$25.00.

Begonia Pendula

(Hanging-Basket Type)

Unsurpassed for vases, hanging baskets, porch and window boxes. Medium-sized flowers all season.

MIXED COLORS. Each, 35c; doz., \$3.75; 100, \$27.50.

FANCY-LEAVED CALADIUMS

These are grown for us by one of the leading hybridizers. They are charming conservatory plants. Being of a tropical nature, they like a warm temperature. They do quite well outdoors during the summer if planted in a shaded place. The foliage covers a wide range of colors, making a grand display. Bulbs should be started in moss with plenty of bottom heat.

Ask for leaflet on their culture and care.

Extra Highly Colored Named Varieties

3 for \$1.00; doz., \$3.50; 100, \$25.00.

Mixed Varieties

An assortment especially blended for us. 3 for 85c; doz., \$3.00; 100, \$22.50.

CALOCHORTUS

(Mariposa Tulip; Butterfly Tulip)

MIXED COLORS. Our mixture comprises all the pleasing shades of pink, rose, white, lavender, and primrose. Excellent for the rock garden. Height about 1½ feet. Doz., \$1.00; 100, \$6.00.

CHIONODOXA

Glory-of-the-Snow

One of the first flowers to appear in the spring. Used for edging, for planting in masses, or in the rock garden.

If wanted by Parcel Post, add 15c per 100 for postage.

LUCILIAE. Bright blue with white center. Doz., 50c; 100, \$3.50.

SARDENSIS. Very deep blue with white center. Doz., 50c; 100, \$3.50.

THE COLORFUL GIANT CROCUS

Giant Named Crocus

The bulbs of these varieties are very large and each is capable of producing several flowers of large size.

BARON VON BRUNOW. Deep blue. Doz., 65c; 100, \$4.50.

ENCHANTRESS. Clear porcelain-blue, large flowering. Early. Doz., 65c; 100, \$4.50.

KING OF THE BLUES. Purple. Doz., 65c; 100, \$4.50.

KING OF THE WHITES. New. Stem and flower are pure white; giant blooms. Doz., 65c; 100, \$4.50.

PURPUREA GRANDIFLORA. Rich purple. Doz., 65c; 100, \$4.50.

REMEMBRANCE. Dark lavender-blue. Doz., 65c; 100, \$4.50.

STIPED BEAUTY. An extra large white flower, evenly striped dark mauve. Doz., 65c; 100, \$4.50.

YELLOW. First-size bulbs. Doz., 65c; 100, \$4.50. Mammoth-size bulbs. Doz., 75c; 100, \$5.50.

GIANT NAMED MIXED. Doz., 50c; 100, \$3.50.

Autumn-Flowering Crocus

COLCHICUM AUTUMNALE. Autumn-flowering bulbs, producing lavender-colored flowers. Can be grown in partial shade and are excellent among low-growing plants and fine for the rockery. Will also bloom without soil or water by placing in the sun in a dish or saucer. Height 8 to 10 inches. Each 35c; doz., \$4.00; 100, \$25.00.

CROCUS SATIVUS. Purple-lilac flowers feathered violet; orange anthers. Doz., 60c; 100, \$4.50.

CROCUS ZONATUS. Rose-lilac, yellow center. Doz., 60c; 100, \$4.50.

BABY CALLA

PINK (Richardia Rehmanni). Dwarf. Blooms rose-pink, fading to cerise as they mature. An unusual flower. Each, 50c; doz., \$5.50.

WHITE CALLA

(Aethiopica)

(Lily-of-the-Nile)

Each Doz. 100

Medium-size bulbs—			
1½ to 1¾ in. diam.	\$0.50	\$4.50	\$35.00
Mammoth bulbs—			
1¾ to 2 in. diam. . .	.75	7.00	45.00
Top-size bulbs—			
2 to 2½ in. diam. . .	1.00	9.00	65.00
Jumbo bulbs—			
2½ to 3 in. diam. . .	1.25	13.00	100.00

SPOTTED CALLA

(Alba Maculata)

Flowers white. Foliage green spotted white. Each, 50c; doz., \$5.00; 100, \$35.00

YELLOW CALLA

(Elliottiana)

The rich golden yellow flowers are large and massive, and produced in abundance. Foliage green, spotted white.

	Each	Doz.	100
Mammoth bulbs . . .	\$0.50	\$5.00	\$35.00
Top-size bulbs75	8.00	60.00
Jumbo bulbs	1.00	10.00	70.00

EREMURUS

(Foxtail Lily; Giant Asphodel)

BUNGEI. Citron-yellow flowers on spikes 5 to 6 feet high. June. Each, \$1.50; doz., \$17.00.

ELWESIANUS. Soft pink flowers on spikes 10 to 12 feet high. June. Each, \$3.00; doz., \$30.00.

HIMALAICUS. Waxy white flowers with golden anthers. Height 6 to 8 feet. Each, \$1.50; doz., \$17.00.

HIM-ROB. Pale silvery pink flowers. Height 8 to 10 feet. June. Each, \$1.75; doz., \$18.00.

ROBUSTUS. Rosy pink. Height 10 feet. June. Each, \$2.75; doz., \$27.50.

SHELFORD. Coppery yellow or orange. Height 7 to 8 feet. June. Each, \$1.75; doz., \$20.00.

ERYTHRONIUM

(Dog's-Tooth Violet)

TUOLUMNENSIS. Charming woodland plants, also effective in the rock garden. Golden yellow, Lily-like flowers. Green leaves. Height 8 inches. Doz., \$1.00; 100, \$6.00.

HENRY F. MICHELL CO.



Prince Henry



Grand Maitre



L'Innocence

GIANT HYACINTHS

For Indoor and Outdoor Growing

DIRECT FROM HOLLAND

Varieties as Illustrated

\$3.00 dozen

\$22.50 per 100

COLLECTIONS

3 each 5 varieties
(15 bulbs) \$ 3.25

6 each 5 varieties
(30 bulbs) 6.25

12 each 5 varieties
(60 bulbs) 12.00



Myosotis



Gertrude

Lovely Flowering Bulbs

for the Garden
and Naturalistic
Plantings



Scilla Campanulata

Scilla Campanulata (Blue Bell or Wood Hyacinth). We offer colors in blue and pink. 1 doz., 75c; \$5.00 per 100.

Grape Hyacinth (Heavenly Blue). Myriads of small blue bell-like flowers. Excellent for naturalistic effects, and rock gardens. Price: 1 doz., 75c; 100, \$5.00.

Fritillaria Imperialis (Crown Imperial). Crownlike cluster of bell-shaped flowers on stems 3 to 4 feet. Mixed colors, 75c each; 1 doz., \$6.00.

Snowdrops. Single. (Galanthus.) Miniature starlike flowers that follow the snowflakes in early spring. Doz., 75c; \$5.00 for 100.

Gloriosa, Superba Rothschildiana. For full description, see page 13. Price: \$1.00 each; \$10.00 per doz.



Fritillaria Imperialis

BULBS
Plant this fall
for next spring's
flowers.



Grape Hyacinth



Snowdrops



Gloriosa



Crocus

Giant Flowering Crocus

Our new Giant Crocus are even larger than pictured here. They produce several flowers from each bulb, and bloom year after year.

	Doz.	100
Baron von Brunow. Deep blue	\$0.65	\$4.50
Enchantress. Clear porcelain-blue	.65	4.50
King of Blues. Dark blue	.65	4.50
King of the Whites. Pure white	.65	4.50
Purpurea Grandiflora. Rich purple	.65	4.50
Remembrance. Lavender-blue	.65	4.50
Striped. White striped mauve	.65	4.50
Yellow 1st size	.65	4.50
Yellow. Mammoth size	.75	5.50
Mixed Colors	.50	3.50

Bulbs for Indoor and Outdoor Culture

COLORED FREESIAS

	Doz.	100
DOUBLE WHITE, ELDER'S. Flowers are a glistening white on very tall stems; very large and similar to a Gardenia. Top-size bulbs\$1.25		\$9.00
FLO, ELDER'S. A light violet-blue. Top-size bulbs 1.25		9.00
GIANT WHITE, ELDER'S. (Plant Patent No. 17.) Giant pure white blooms on very long stems. Top-size bulbs 1.25		9.00
GOLDEN DAFFODIL. Golden yellow with bright orange blotch on lower lip. Jumbo bulbs 1.25		9.00
JUDY, ELDER'S. Wonderful double, golden yellow Freesia. A large-flowering type, excellent for forcing. Top-size bulbs 1.25		9.00
MISS BLANCHE BLUE. (Plant Patent No. 98.) Deep bluish lavender flowers of extra large size. Top-size bulbs 1.25		9.00
TECOLOTE HYBRIDS. Flowers immense size; wide open and delightfully fragrant. Plants of unusual strength and vigor. Pure White Bright Red Light Yellow Finest Blue Pink Purple Mammoth bulbs 1.00		7.00
Top-size bulbs 1.25		9.00



Freessias

FREESIAS—Continued

	Doz.	100
ORCHIDEA. Soft pearly orchid with yellow throat; large flower. Top-size bulbs\$1.25		\$9.00
PURITY (Superflora). Our strain is the true improved type, producing large, glistening, pure white flowers on long stems. Jumbo bulbs 1.50		11.00
ROSY MORN, ELDER'S. Beautifully blended rose-pink. Mammoth bulbs ... 1.00		7.00
SUNSET. A new color in Freesias, being a flame-orange. Top-size bulbs 1.00		7.00
RAINBOW MIXTURE. Mammoth bulbs75		5.00

FRITILLARIA Imperialis (Crown Imperial)

(See page 12 for colored illustration.)
A majestic plant, producing, early in spring, stout stems 3 to 4 feet long with a crown-like cluster of gorgeously colored, bell-shaped flowers at the top. Ideal for planting in hardy borders.
MIXED COLORS. Each, 75c; doz., \$6.00.

FRITILLARIA Meleagris (Guinea-Hen Flower; Checker Lily)

Dwarf, spring-flowering plants with large, pendent, bell-shaped flowers. Excellent for pot culture and valuable for large groups in the garden border; also for the rock garden.
MIXED. Doz., 50c; 100, \$4.00.

BABY GLADIOLUS

For Forcing.

An extremely popular flower of marvelous grace and beauty. Wonderful for forcing.

	Doz.	100
CARDINAL. Rich red\$1.00		\$7.00
PEACH BLOSSOM. Soft pink 1.00		7.00
PINK PERFECTION. A new rose-pink 1.00		7.00
SPITFIRE. Deep reddish salmon 1.00		7.00
THE BRIDE. Pure white .. 1.00		7.00

TRISTIS SUPREME

(Baby Gladiolus)

The flowers are creamy white and carried on tall, graceful stems. Delightful spicy fragrance. Recommended for indoor culture only and grown in the same manner as Freesias. Doz., \$1.75; 100, \$12.00.

GLORIOSA SUPERBA ROTHSCHILDIANA

(See page 12 for colored illustration)

Handsome African tuberous-rooted plant known as "Climbing Speciosa Lily," used mostly as a greenhouse climber, but can be grown successfully outdoors in a warm, sunny location. May be grown on a trellis as it finds support through the numerous tendrils. It grows 6 to 8 feet and produces large, gorgeous, lily-like flowers which open bright yellow, changing to deep scarlet. Strong tubers. Each, \$1.00; doz., \$10.00.

GLOXINIAS

Ready January-February.

Gorgeous plants for either the conservatory or garden. They prefer a moist soil and a shady situation. Bulbs may be started as early as January, but should not be set outdoors until May 15th. We offer extra fine, large bulbs.

	Each	Doz.
BLANCHE DE MERU. Rose-pink\$0.50		\$5.00
EMPEROR FREDERICK. Red, striped white50		5.00
EMPEROR WILLIAM. Purple, striped white50		5.00
ETOILE DE FEU. Scarlet50		5.00
MONT BLANC. White50		5.00
ROI DES ROUGES. Dark crimson50		5.00
TIGRINA. Spotted50		5.00
VIOLACEA. Light purple .. .50		5.00

GRAPE HYACINTHS

(Muscari)

Beautiful early spring-flowering bulbs for planting in masses or in the rock garden, in either shade or sun. Once planted they multiply rapidly and send up flower spikes by the score each year. Also adapted for growing indoors. Perfectly hardy. Height 6 to 8 inches.

BOTRYOIDES ALBUM. White. Doz., 75c; 100, \$5.00.
HEAVENLY BLUE. Sky-blue. Doz., 75c; 100, \$5.00.
DARK BLUE. Doz., 75c; 100, \$5.00.
PLUMOSUM (Feathered Hyacinth). Handsome, feathery plumes of violet colored flowers. Ideal for rock garden. Doz., 75c; 100, \$5.00.



Muscari

Bulbs for Indoor and Outdoor Culture



Dutch Iris

DUTCH IRIS

(Iris Xiphium Hybridum)

D. HARING. Grayish white, tinted lilac; falls pure white. Large flower. Early. Doz., \$1.50; 100, \$10.00.

WHITE EXCELSIOR. Immense flowers of purest white. Very early. Doz., \$1.50; 100, \$10.00.

YELLOW QUEEN. Standards and falls golden yellow. Thin wiry stems. Doz., \$1.25; 100, \$9.00.

IRIS FILIFOLIA

IMPERATOR. Clear deep blue; producing large, elegant flowers. Large bulbs, doz., \$1.25; 100, \$9.00.

IRIS TINGITANA

WEDGEWOOD. A very free-blooming variety, producing enormous deep blue flowers on long, strong stems. Very early. Large bulbs, doz., \$1.50; 100, \$10.00. Jumbo bulbs, doz., \$2.00; 100, \$12.00.

ENGLISH IRIS

KING OF THE BLUES. Brilliant deep purple-blue of striking effect. Doz., \$1.75; 100, \$12.50.

OTHELLO. A beautiful shade of rich wine-red. Doz., \$1.75; 100, \$12.50.

PRINCE ALBERT. Bright lavender-blue, very delicate and effective. Doz., \$1.75; 100, \$12.50.

SUNSET. A delicate lavender-pink. Doz., \$1.75; 100, \$12.50.

TRICOLOR. Standards purple; falls white overlaid with bright blue. Doz., \$1.75; 100, \$12.50.

MIXED. Doz., \$1.65; 100, \$12.00.

IXIAS

A charming little conservatory bulb, but may also be planted outdoors, if placed in a protected location in well drained soil with plenty of covering during the winter. This bulb produces long, slender, graceful spikes of beautiful blooms. Its colors are rich, varied, and beautiful, the center always differing in color from the other parts of the flower, so that the expanding blossoms present a picture of gorgeous beauty. Desirable for pots. Doz., 75c; 100, \$5.00.

LACHENALIA

A newer bulb in this country but well known in England as the Cape Cowslip. They produce spikes of 12 to 18 slender tubular flowers about 1 inch long, resembling a French Roman Hyacinth. Average length of stem 12 to 15 inches. An excellent pot plant, fine for cutting. Culture same as for Freesia.

AUREA. Beautiful large golden yellow, pendulous flowers, about 25 to a stem. Very bright and attractive pot plant. Doz., \$2.00; 100, \$15.00.

LEUCOCORYNE

IXIOIDES ODORATA (Glory-of-the-Sun). Requires the same culture as Freesias and blooms during February and March. Its wiry stems, 1½ to 2 feet, carry clusters of beautiful lavender, Phlox-like flowers. Doz., \$1.75; 100, \$12.00.

LEUCOJUM

VERNUM (Spring Snowflake). Pretty bulbous plant similar to the Snowdrop but larger and stronger growth. Beautiful white flowers, tipped with green. Height 8 to 10 inches. Doz., \$1.00; 100, \$6.50.

ORNITHOGALUM

ARABICUM (Star of Bethlehem). An attractive flowering bulb for indoor or outdoor culture. Petals pure white, streaked light green with a black center. Very fragrant. Height 2 feet. 3 for 50c; doz., \$1.50; 100, \$10.00.

OXALIS

	Doz.	100
BOWEI. Pink	\$0.50	\$3.50
BUTTERCUP. Yellow50	3.50
LAVENDER (Grand Duch- ess)50	3.50

RANUNCULUS

An attractive flower resembling a giant double Buttercup or double Poppy. Easily grown in pots for winter blooming or in cold frames for spring. Height 12 to 15 inches.

CLAREMONT HYBRIDS, MIXED. An improved choice mixture of selected colors and shades. Doz., \$1.00; 100, \$7.00.

TECOLOTE GIANTS

	Doz.	100
Red Shades	\$1.00	\$7.00
Yellow Shades	1.00	7.00
Pink Shades	1.00	7.00
Orange Shades	1.00	7.00
White Shades	1.00	7.00

Mixed. A balanced blend of all colors. The huge flowers run mostly to the full double form90 6.00

SCILLAS

(Squills; Wood Hyacinths; Bluebells, etc.)

CAMPANULATA ALBA. White. Doz., 75c; 100, \$5.00.

CAMPANULATA, BLUE. Doz., 75c; 100, \$5.00.

CAMPANULATA ROSEA. Pink. Doz., 75c; 100, \$5.00.

SIBIRICA. Blue. Doz., 85c; 100, \$6.00.

SPRING BEAUTY. Light blue. Very large and free flowering. Doz., \$1.00; 100, \$6.50.

SNOWDROPS - Galanthus

One of the earliest bulbs to bloom in the spring. Thrives in both sun and shade and in almost any situation or soil. Excellent for banks, edgings, or the rockery. Perfectly hardy. Height 6 to 8 inches.

DOUBLE. Pure white. Doz., 85c; 100, \$6.00.

SINGLE. Pure white. Doz., 75c; 100, \$5.00.

SPARAXIS

FINEST MIXED. Delightful spring-blooming Cape bulbs of the Ixia group, their beautiful flowers being borne on graceful spikes about 6 to 8 inches high, of the brightest shades. They are tigered, blotched, spotted, streaked and flushed, a complete riot of color. They are also excellent for conservatory and indoor treatment. For the southern rock garden they are indispensable. Protect in cold climates. Doz., 65c; 100, \$4.00.

SPIRAEA - Astilbe

Ready in December.

DEUTSCHLAND. Purest white. Strong grower and good forcer. Each, \$1.00; Doz., \$10.00.

GLADSTONE. Popular variety. Immense trusses of snow-white flowers, produced in great abundance. Each, \$1.00; doz., \$10.00.

GLORIA SUPERBA. Dense, feathery plumes of a lovely brilliant dark pink color with a soft lilac shade. Each, 75c; doz., \$8.00.

PEACH BLOSSOM. A very lovely shade of peach-blossom-pink. Free flowering. Each, 75c; doz., \$8.00.

QUEEN ALEXANDRA. Beautiful shade of pink. Very desirable. Each, 75c; doz., \$8.00.

RHINELAND. A very fine forcing variety. Flowers bright crimson, shading to salmon. Each, 75c; doz., \$8.00.

STERNBERGIA

LUTEA MAJOR. A very effective autumn-flowering bulbous plant producing Crocus-like flowers of a rich golden yellow. The bulbs make a charming decoration if planted in bowls or pots and flower a few weeks after planting. Out-of-doors the Sternbergia likes a warm, well drained situation on banks or borders, where it should be left undisturbed. The bulbs should be planted 9 inches deep, and in cold districts a covering of dry litter should be given in winter. Fine for the rock garden. Doz., \$1.75; 100, \$12.50.

Michell's Hardy Garden Lilies

What is a garden without a planting of Hardy Lilies? For herbaceous borders they are not to be exceeded. Planting among perennials, for sufficient shade, is recommended.

Planted from 6 to 10 inches deep, bulbs thrive when enveloped in sand. Manure should not come in direct contact with the bulb, but may be placed 4 to 6 inches underneath—loose-petaled bulbs should be planted on their sides rather than upright. Leaf or litter protection during the winter is best.

STURDY GARDEN LILIES for FALL PLANTING

CANADENSE (Canadian Bellflower Lily). Bright yellow flowers, spotted black inside. Height 3 to 5 feet. June. Each, 30c; doz., \$2.75; 100, \$20.00.

CANADENSE RUBRUM. Crimson with black spots. Height 3 to 4 feet. August. Each 35c; doz., \$3.50; 100, \$25.00.

ELEGANS, MIXED. Shades of orange. Fine for the rock garden. Height 2 feet. June, July. Each, 35c; doz., \$3.50; 100, \$25.00.

HENRYI (Yellow Speciosum Lily). Distinct orange-yellow flowers. Often 7 feet. July, August. Mammoth bulbs, each, 50c; doz., \$5.50; 100, \$40.00. Top-size bulbs, each, 75c; doz., \$8.00; 100, \$55.00.

PARDALINUM GIGANTEUM (Sunset Lily). A California variety bearing 12 to 20 strongly recurved flowers of bright orange, spotted dark crimson. Height 4 to 5 feet. July. Each 50c; doz., \$5.00; 100, \$30.00.

SPECIOSUM ALBUM. The best late-flowering, pure white, hardy garden Lily of easy culture. Its graceful stems and foliage are set off to wonderful advantage by the pure white blooms. Height 3 to 4 feet. September. Large bulbs, each, \$1.00; doz., \$11.00; 100, \$85.00. Mammoth bulbs, each, \$1.25; doz., \$14.00; 100, \$100.00.

SPECIOSUM RUBRUM

Delicacy itself. An old garden favorite.



Lilium Speciosum Rubrum

SPECIOSUM RUBRUM OR ROSEUM.

Delicate pink, almost white, spotted red. One of the old garden favorites. Height 4 to 5 feet. September. Mammoth bulbs, each, \$1.00; doz., \$10.00; 100, \$75.00. Top-size bulbs, each, \$1.25; doz., \$14.00; 100, \$100.00. Jumbo bulbs, each, \$1.50; doz., \$16.00; 100, \$120.00.

SUPERBUM (Turk's-Cap Lily). Grows from 4 to 5 feet high and produces from 15 to 25 orange-red flowers on a stalk. August. Each, 50c; doz., \$5.00; 100, \$35.00.

TENUIFOLIUM (Coral Lily). Grows 1½ feet high, with clusters of brilliant scarlet, starlike flowers on wiry stems. Each 35c; doz., \$3.50; 100, \$20.00.

TESTACEUM. Many flowers of warm nankeen-yellow. Base rooting. Height 4 to 5 feet. June, July. Plant 2 to 3 inches deep. Each, \$1.35; doz., \$15.00.

WILLMOTTIAE. A vivid orange-red with recurved petals and many small brown spots. Height 4 to 5 feet. July, August. Each, 50c; doz., \$5.00; 100, \$30.00.

OTHER SPLENDID GARDEN and FORCING LILIES

CROFT LILY BULBS

This is really the best Lily produced in this country. It is absolutely clean and free from disease. Can be grown in a cool temperature and will produce many blooms. A truly splendid Lily.

	Each	Doz.	100
8 to 9 in. circ.	\$1.00	\$10.00	\$ 75.00
9 to 10 in. circ.	1.50	16.00	120.00
10 to 11 in. circ.	2.00	22.00	175.00

MICHELL'S EASTER LILY BULBS FOR INDOOR CULTURE "Special Brand"

LILIUM HARRISI

True Bermuda Easter Lily Ready Now

	Each	Doz.	100
8 to 10 in. circ.	\$0.75	\$ 8.50	\$ 65.00
9 to 11 in. circ.	1.25	14.00	100.00
11 to 13 in. circ.	2.00	22.00	
13 to 15 in. circ.	3.00	35.00	

LILIUM HOWARDI BULBS

This variety is similar to Harrisii with the exception that it can be brought into bloom much earlier. Quite profuse in bloom and flowers are stronger which is a distinct advantage.

	Each	Doz.	100
8 to 10 in. circ.	\$0.75	\$ 8.50	\$ 65.00
9 to 11 in. circ.	1.25	14.00	100.00
10 to 12 in. circ.	2.00	22.00	

LILIUM CANDIDUM (Hardy)

ST. JOSEPH'S, MADONNA, OR ANNUNCIATION LILY. Pure white and very fragrant.

	Each	Doz.	100
Selected bulbs ...	\$0.60	\$ 6.00	\$ 45.00
Mammoth bulbs...	.65	6.50	50.00
Top-size bulbs ..	.75	8.00	60.00
Jumbo bulbs	1.00	10.00	75.00

LILIUM PHILADELPHICUM (Orange Cup Lily)

Orange-red with purple spots. Leaves whorled or scattered. Will thrive in either shaded or open locations. Height 1 to 3 feet. July and August. Each 40c; doz., \$4.50; 100, \$30.00.

LILIUM PHILIPPINENSE FORMOSANUM

This wonderful Lily produces large, pure white blooms tinted with rose on the outside. In size and form it resembles the Easter Lily, with a similar delightful fragrance. It is a profuse bloomer and invaluable as a cut flower. Perfectly hardy in cold climates if given a mulch in the fall. Each, 50c; doz., \$5.00; 100, \$37.50.

LILIUM REGALE Lilium Myriophyllum

Large flowers with centers flushed golden yellow, shading to creamy white at outer edges; the reverse of the flowers is streaked with brown, shaded a pearly tint. Its sturdy stems are 3 to 5 feet high. Plant in fall or early spring, 8 to 9 inches deep. Blooms in July. (Ready in October.)

	Each	Doz.	100
Large selected bulbs,			
7 to 8 in. circum.	\$0.35	\$3.50	\$25.00
Mammoth bulbs,			
8 to 9 in. circum.	.50	5.00	35.00
Top-size bulbs,			
9 to 10 in. circum.	.60	6.00	40.00
Jumbo bulbs,			
10 to 11 in. circum.	.75	8.00	60.00

LILY-OF-THE-VALLEY PIPS

FOR OUTDOOR PLANTING ONLY

Bundles contain 25 good sized pips, with good root growth, all of which will flower with the proper care. The best of the stock is being selected for us. We can make shipment of these up to April 1st. Bundles of 25 pips, \$1.00; doz. bundles, \$10.00.

Michell's Hardy Perennial Plants

Perennial Plants have a fascination that captures the imagination, garden favorites and justly so, for there is no time during the entire flowering season when some variety is not in bloom. Beginning in early April they provide a constantly varying pageant of color through the summer. They appear year after year and as each variety has a fixed time for blooming be sure to make careful selection. An effective combination is Peonies with Daffodils and Lilies. The rooting system of these will not interfere with each other, while the colors will enhance the beauty of your garden.

We wish to emphasize the necessity of planting at the proper time. To guide your planting schedule we have compiled a list of Hardy Perennial Plants that should be planted in October and November.

AJUGA - Bugle

REPTANS. The well known blue variety. Will stand sun or shade. 6 in. 3 for \$1.30; 10 for \$4.00.

ALYSSUM

SAXATILE COMPACTUM (Basket of Gold). An excellent, low-spreading plant for rockery or border, growing about 10 inches high. Masses of golden yellow flowers in May. 3 for \$1.30; 10 for \$4.00.

SAXATILE COMPACTUM FL.-PL. A double-flowering form of the well known Basket of Gold. 3 for \$1.60; 10 for \$5.00.

ANCHUSA - Sea Bugloss

MYOSOTIDIFLORA. A distinct dwarf variety from the Caucasus Mountains, with clusters of pretty blue Forget-me-not-like flowers in May. 1 ft. 3 for \$1.60; 10 for \$5.00.

ANEMONE - Windflower

Spring Flowering Kinds.

PULSATILLA (Pasqueflower). The violet-blue flowers are followed by silky seedpods. A picturesque and curious plant. 10 to 12 in.

PULSATILLA ALBA. A dainty white-flowering form. 3 for \$1.30; 10 for \$4.00.

Anemone Japonica varieties (fall flowering), are supplied in the spring only.

AQUILEGIA - Columbine

COERULEA. 2 feet. The famous Rocky Mountain Blue Columbine.

LONGISSIMA. Flowers of delicate pale yellow with spurs 4 inches long, produced abundantly from late May on.

LONGISSIMA HYBRIDS. The achievement of English hybridizers! They have crossed the bewildering beauty of the finest Mrs. Scott Elliott's Hybrids with the fantastic spurs of Longissima. Available in assorted colors only. 2½ to 3 feet. May-June. 3 for \$1.60; 10 for \$5.00.

MRS. SCOTT ELLIOTT'S STRAIN. Outstanding for its wide range of color. We offer these long-spurred Columbines with justifiable pride.

All Aquilegias: 3 for \$1.30; 10 for \$4.00, except where noted.

ARABIS - Rock Cress

ALPINA FL.-PL. The double white Rock Cress, flowering from April until June. 3 for \$1.60; 10 for \$5.00.

ARTEMISIA

SILVER KING. Sometimes called the "Ghost Plant." Has silvery white, finely cut leaves. Excellent in the perennial border to accentuate the beauty of flowering plants. 3 feet. 3 for \$1.30; 10 for \$4.00.

CIMICIFUGA - Bugbane

This variety will help to solve many a problem in the shady garden. Plant in large groups, and enjoy a delightful display of white spirelike flowers for several months.

RACEMOSA. 4 to 6 ft. July, August. 3 for \$1.30; 10 for \$4.00.

DIANTHUS - Pinks

BOBBIE. A deep pink gem.

CHEERFULNESS. New. A pleasing semi-double white with crimson markings. 3 for \$2.00; 10 for \$6.00.

LITTLE JOE. A delightfully fragrant, compact plant with vivid red flowers.

MEG GARDNER. 15 in. A recent introduction bearing large white flowers with distinct red centers. June, July.

OLD SPICE. Pat. No. 499. Carnation-like salmon-pink flowers, clove-scented. 3 for \$1.60; 10 for \$5.00.

PURITY. A pure white.

TINY RUBIES. The miniature plants produce Carnation-like flowers on stems 4 to 5 inches high. In full sun the color is pink; with partial shade it approaches rose. It is a "must" for your rock garden.

WHITE RESERVE. Pure white with strong stems. An ideal Dianthus for cutting.

NEW ROSE. Unique hybrids with double blooms of red, rose, pink and salmon. Mixed colors only. 3 for \$2.00; 10 for \$6.00.

All Dianthus, except where noted: 3 for \$1.30; 10 for \$4.00.

Plant orders amounting to \$2.50 or more, no packing charge. Orders less than \$2.50, please add 25c packing charge.



Pacific Giant Delphiniums

MICHELL'S MODERN HYBRID DELPHINIUMS

In every garden of distinction you will find a generous use of Modern Delphiniums.

They are majestic in the towering splendor of their perfect spikes, in their range of exquisite blues, purples, and mauves.

The plants we offer are carefully selected seedlings of the English Prize-winning Strains checked as to type, while in bloom.

PACIFIC GIANTS. This new strain, developed in California, carries a fine range of colors and the structure of the best foreign varieties. Our plants have been grown from the originator's own stock. Strong plants. 3 for \$2.25; 10 for \$6.50. Extra selected plants, \$1.25 each; 3 for \$3.00; 10 for \$9.00.

MICHELL'S PACIFIC GIANTS DELPHINIUMS Hollyhock Strain

A welcome innovation is the following offer of the Hollyhock Delphiniums, released in 4 separate color groups. These plants are grown from the identical strain which comprises our well known Named Delphiniums. The plants are all heavy, field-grown.

Light Shades, Mauve Shades, Intermediate Shades, Dark Shades, or Mixed. Each, \$1.00; 3 for \$2.75; 10 for \$7.50.

STANDARD HARDY DELPHINIUMS

BELLADONNA, IMPROVED CLIVEDEN BEAUTY. A magnificent strain of the pure blue Delphinium, producing long spikes during June-July, and in the fall. 3 for \$1.50; 10 for \$4.50.

BELLAMOSUM. A dark blue form of Belladonna, with which it is identical except in color, which is a rich deep blue. 3 for \$1.50; 10 for \$4.50.

CHINENSIS GRANDIFLORUM, BLUE MIRROR. A sensationally beautiful dwarf blue Delphinium resembling the Chinese forms, but the flowers are flat saucers of aquamarine, without spurs. The habit is compact, forming neat 18-inch bushlets and the sprays are produced in endless profusion from early May until frost. This is a true perennial and is exceedingly hardy, wintering successfully at low temperatures of 16 below zero. A true joy for every garden. 3 for \$1.50; 10 for \$4.50.

MICHELL'S GOLD MEDAL HYBRIDS, MIXED. The plants are of strong, vigorous habit, with large flowers on long spikes. 3 for \$1.60; 10 for \$5.00.

PARAMOUNT HYBRIDS. These are also selections from our Hollyhock strain but can be supplied in mixed colors only. 3 for \$2.25; 10 for \$6.50.

Michell's Favorite Perennials

PLANT THIS FALL

DICENTRA (Dielytra)

***EXIMIA.** (Fringed Bleeding Heart.) A dwarf-growing variety with beautiful, finely cut foliage and showy, pretty pink flowers. 3 for \$1.30; 10 for \$4.00.

SPECTABILIS (Bleeding Heart; Seal Flower). Its long sprays of graceful, heart-shaped flowers are always attractive. 3 for \$2.25; 10 for \$6.50.

Fall shipment only on the above.

DIGITALIS - Foxglove

GIANT SHIRLEY, MIXED. These are a genuine Shirley production of extraordinary size and vigor. The flower heads are over 3 feet long, crowded with large, bell-shaped blossoms, ranging in color from white and shell-pink to deepest rose. 3 for \$1.30; 10 for \$4.00.

DORONICUM Leopard's-Bane

These gleaming yellow Daisy-like flowers are a top-notch source of color in the spring border and rock garden. For best results, grow them in partial shade.

MME. MASON. Compact habit; noted for its large bloom. April, May. 3 for \$1.60; 10 for \$5.00.

FUNKIA (Hosta) (Plantain Lily; Day Lily)

COERULEA LANCEOLATA. Requires a minimum of care. The plants with their lush foliage are always nice, and the flowers are lovely during summer. 3 for \$1.60.

SUBCORDATA GRANDIFLORA. Very large, pure white, Lily-shaped, fragrant flowers. 2½ to 3 ft. Aug., Sept. 3 for \$2.80; 10 for \$8.00.

UNDULATA MEDIA PICTA. Green and white variegated foliage. Purple flowers. 2 ft. July. 3 for \$1.30; 10 for \$4.00.

GAILLARDIA Blanket Flower

GRANDIFLORA. Dark brown center, surrounded with a rich orange disc; petals on outer edges yellow. 3 for \$1.30; 10 for \$4.00.

GYPSOPHILA Baby's Breath

BRISTOL FAIRY. A wonderful improvement over *G. paniculata* fl.-pl. It is a distinct new form, producing immense panicles of pure white, double flowers very early in the season and continuing until frost. 3 for \$2.25; 10 for \$6.50.

OLDHAMIANA. Abundant masses of white flowers delicately tinted pink. In bloom from August until late fall. 3½ feet. 3 for \$1.60; 10 for \$5.00.

***REPENS.** Beautiful trailing plant for the rockery, with clouds of small white and pink flowers during July and August. 3 for \$1.60; 10 for \$5.00.

Plant orders amounting to \$2.50 or more, no packing charge. Orders less than \$2.50, please add 25c packing charge.

HELLEBORUS Christmas Rose

They grow best in rich soil and a shady location; unexcelled for the beauty of their flowers, their evergreen foliage and their attractive appearance the year round.

***NIGER.** 1 foot. Single white blooms flushed with pink, on sturdy stems. December to March. Each, \$1.75; 3 for \$4.50; 10 for \$15.00.

HEUCHERA - Coralbells

Light soil and full sun suit them best, but they will make an admirable show in partial shade.

BRIZOIDES. 18 to 24 inches. Vigorous grower; light pink flowers. May-August.

ROSAMONDE. Pleasing coral-pink flowers on long stems. 2 ft. June-Sept.

SANGUINEA HYBRIDS. A wonderful range of colors from white through the various shades of pink to deepest red.

All Heucheras: 3 for \$1.60; 10 for \$5.00.

HOLLYHOCKS

DOUBLE. Our strain of these is very fine, and we offer them in separate colors only: Yellow, Crimson, Pink, and White.

SINGLE, MIXED. They are of stronger growth than the double-flowering type and consequently make a better showing. We can supply these in mixed colors only.

Above Hollyhocks:

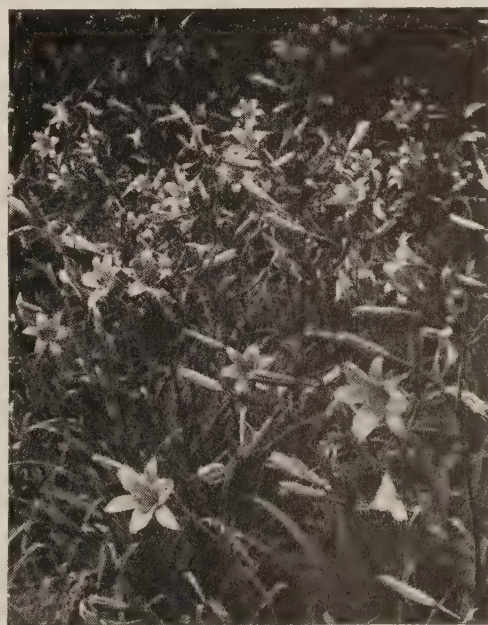
3 for \$1.30; 10 for \$4.00.

HEMEROCALLIS (Daylily)

New Giant-Flowering Hybrids

AUGUST PIONEER. Chrome-orange blooms of medium size. Especially valuable for its late period of bloom—early August through September. 2½ ft. Each, \$1.10; 3 for \$2.85.

BAGDAD. Large flowers borne on plants of considerable height; coppery red petals with orange throat. 5 ft. July. Each, \$1.10; 3 for \$2.85.



Hemerocallis

BOUTONNIERE. Flourishing clusters of small flowers. The throat of each is orange-yellow with darker petals. 2½ feet. August, September. Each, \$1.10; 3 for \$2.85.

CURLY PATE. Medium-sized yellow, cup-shaped flowers with petals curled at the ends. 4½ ft. Each, 90c; 3 for \$2.50.

D. D. WYMAN. Golden yellow with tawny splashes. 3 feet. Late June, July. Each, 75c; 3 for \$1.60.

DOVER. Large; clear orange. 4 feet. June, July. Each 75c; 3 for \$1.60.

GEORGE YELD. Distinctly large; the outer petals are rich orange-yellow and the inner flushed with rose. 4 ft. July, Aug. Each, \$1.10; 3 for \$2.85.

GOLDENI. Deep golden orange; attractive in form; very free flowering. 2 ft. Late June. Each, 75c; 3 for \$1.60.

HYPERION. One of the most popular varieties—pale canary-yellow. 3½ ft. July. Each, \$1.10; 3 for \$2.85.

IMPERATOR. A distinct variety with rich orange-red coloring. 4 ft. July, August. Each, \$1.10; 3 for \$2.85.

J. A. CRAWFORD. Clear gold. 4 feet. Each, \$1.00; 3 for \$2.25.

J. R. MANN Golden yellow. 2½ feet. Each, 75c; 3 for \$1.60.

MANDARIN. Unusually tall and especially lovely in the evenings is this lemon-yellow variety for late summer. 5 feet. August. Each, \$1.00; 3 for \$2.50.

MIKADO. A glamorous combination—orange with a mahogany-red spot on each petal. Occasionally blooms in the fall. 3 feet. June, July. Each, \$1.10; 3 for \$2.85.

MODESTY. Palest yellow; amazing in size. 4 feet. June. Each, \$1.00; 3 for \$2.50.

MRS. A. H. AUSTIN. The cup-shaped deep orange-yellow blooms are of medium size; most attractive. 2½ feet. August. Each, \$1.10; 3 for \$2.85.

MRS. W. H. WYMAN. Best described as pale glistening yellow. 3½ feet. August. Each, 75c; 3 for \$1.60.

OPHIR. Its rich golden yellow coloring has made this a favorite variety. 4 ft. July. Each, \$1.00; 3 for \$2.85.

THE GEM. An unusually popular yellow variety; large size. 3 feet. July, August. Each, 75c; 3 for \$1.60.

We offer two collections of these lovely Daylilies: A—for the Flower Border of 3-foot width; B—for the wider Flower Border up to 5 feet.

Collection A

6 varieties growing 1½ to 3 feet.

Boutonniere Mrs. A. H. Austin

D. D. Wyman J. R. Mann

Goldeni Mikado

SPECIAL OFFER—\$4.75

(Value \$5.55)

Collection B

6 varieties growing 3 to 5 feet.

Bagdad Imperator

George Yeld Ophir

Hyperion Curly Pate

SPECIAL OFFER—\$5.75

(Value \$6.60)

An Iris Collection Grows More Valuable With the Years

Garden Iris

These Iris are one of the most easily grown early-flowering perennials. The ideal planting season is August through to October. Should it be necessary to plant in the spring, obtain your supplies as soon as frost is out of the ground. Late spring orders are carried over until the fall planting season in the interest of our customers.

50c each; 3 of one variety, \$1.40, except those marked *.

- ALICE HARDING.** Soft satin-yellow.
- ALTA CALIFORNIA.** The tallest of the new yellow Iris.
- AMITOLA.** Standards russet; falls pink.
- ***ANNE NEWHARD.** A new Pansy-blue. Each, \$2.00.
- ***ANGELUS.** Lilac-pink blend. Very desirable. Each, \$1.00; 3 for \$2.75.
- AT DAWNING.** Pink, white and rose blend. Dainty color effect.
- ***BLACK WINGS.** A popular Iris of deepest midnight-blue overlaid with a frosty black sheen. Ideal for foreground planting. (See color plate, page 21.)
- BLUE TRIUMPH.** Lovely pale blue.
- ***BRAHMIN.** A new intense blue, very much admired. Each, \$1.00; 3 for \$2.75.
- ***BRONZINO.** Frosty golden bronze, growing to a height of 40 inches. Each, \$1.00; 3 for \$2.75.
- CAFE-AU-LAIT.** Soft creamy tan self.
- CALIFORNIA GOLD.** Tall golden yellow. Fine.
- ***CHINA MAID.** A blend of pink, bronze and lilac. Each, \$1.50; 3 for \$4.00.
- ***CHESTNUT HILL.** A deep yellow self. Fragrant. Strong grower. Each, \$1.00. (See color plate, page 21.)
- CHEERIO.** Standards tan; falls violet-red. Very fine. (See color plate on page 21.)
- ***CITY OF LINCOLN.** The best variegated variety to date. Each, \$1.50.
- CLARA NOYES.** Rich blend of Talisman-rose tints. (See color plate on page 21.)
- COPPER LUSTRE.** Copper and gold blend. Copper shades in Iris have become favorites with many gardeners.
- CORONET.** A blended self of golden tan.
- CROWN JEWEL.** An unusual tone of burnt orange.
- CRYSTAL BEAUTY.** Large, white. Planted with blues, makes an effective showing in the Iris garden.
- DAUNTLESS.** Red-purple; tall and large.
- DREAM.** Light pink; very popular.
- ***ELMOHR.** A tall William Mohr, and an exceptionally fine Iris. Each, \$4.00.
- EL CAPITAN.** Violet-lavender, large flower.
- ***EL TOVAR.** Used in groups of three or five, it makes a massive blend of color. Tall, late. Each, \$1.00; 3 for \$2.75.
- ENCHANTMENT.** Soft violet. Tall; fine.
- EROS.** Pale coral-pink; tall, fine.
- ETHYLWYNNE DUNBAR.** A deep pink self.
- EUPHONY.** Ruffled copper blend.
- ***FLORA CAMPBELL.** Rich russet-red self. Each \$2.00; 3 for \$5.50.
- ***FRANK ADAMS.** Standards yellow; falls crushed strawberry. Each, \$1.00; 3 for \$2.75.
- FREDA MOHR.** A pink bicolor; large.

- ***FRIVOLITE.** Shrimp-pink. Each, \$1.00; 3 for \$2.75.
- ***GOLDEN HIND.** Yellow tinted orange. Each, \$1.00; 3 for \$2.75.
- ***GREAT LAKES.** A fine new blue; very large blooms. Each, \$2.00; 3 for \$5.50.
- GUDRUN.** Large white flower.
- ***HELEN M. RIEDEL.** A blend of fine orange tints. Each, \$1.00; 3 for \$2.75.
- ***INDIAN HILLS.** Rich true purple. Each, \$1.00; 3 for \$2.75.
- JEAN CAYEUX.** Golden bronze blend.
- ***KING JUBA.** New variegata, much admired. Each, \$1.00; 3 for \$2.75.
- ***LILAMANI.** Velvety black self; large flower and very striking. Each, \$1.00; 3 for \$2.75.
- ***LOUVOIS.** Brown and maroon. Each, \$1.00; 3 for \$2.75.
- MAISIE LOWE.** Dark blue bicolor.
- ***MARQUITA.** Ivory-yellow, large, fine form. Each, \$1.00; 3 for \$2.75.
- MARY GEDDES.** A pleasing blend of red shades.
- ***MATTERHORN.** Pure white, very large. The finest white known. Each, \$2.00; 3 for \$5.50.
- MEDRANA.** Dark smoky claret.
- MELCHIOR.** Bronze and crimson.
- ***MISS CALIFORNIA.** Beautiful rose-lilac. Each, \$1.00; 3 for \$2.75.
- NARANJA.** Beautiful orange-yellow.
- PINK SATIN.** A true pink Iris.
- RAMESES.** A Dykes Medal Winner in Iris. Blend of colors.
- ***RED DOMINION.** Standards red; falls velvet-red; rich color. Each, 75c; 3 for \$2.00.
- ROSE DOMINION.** Rose color.

- ***ROYAL COACH.** Bright yellow Plicata. Each, \$1.00; 3 for \$2.75.
- SAN FRANCISCO.** White Plicata.
- ***TREASURE ISLAND.** Olive-yellow, beard deeper shade. Each, \$1.00; 3 for \$2.75.
- VENUS DE MILO.** A fine white.
- ***WABASH.** Standards white; falls dark blue edged white. Should be in every Iris garden. (See color plate on page 21.) Each, \$1.00; 3 for \$2.75.
- ***WHITE MARBLE.** White. A sturdy grower. Each, \$1.00; 3 for \$2.75.
- WILLIAM MOHR.** Large blooms of self pale lilac, veined deep violet, producing a lovely effect.

GARDEN IRIS

Fall Blooming Varieties.

These will give you bloom in the spring and again in the fall. No garden should be without them. 3 for \$1.35.

AUTUMN ELF. Standards cream; falls lavender. Very fragrant.

AUTUMN KING, JUNIOR. Blue, lavender bicolor.

BLACK MAGIC. Blackish purple.

ELEANOR ROOSEVELT. Deep red-violet.

SANGREAL. Yellow.

WHITE AUTUMN KING. Pure white.

ORIENTAL IRIS

These Iris are the most beautiful of all and are becoming more popular each season. They begin blooming about the middle of June and continue for about five to six weeks. While they succeed in almost any soil and under any conditions, they delight in a deep rich moist location.

AZURE. Double; blue with yellow base.

BETTY HOLMES. Large; white, orange center.

CATHARINE PARRY. Blue overlaid rosy red, high tufts in center.

ELEANOR PARRY. Double; claret-red with white and blue flush.

FASCINATION. Double; soft lavender.

GOLDBOUND. White with yellow stripe in center.

MOUNT HOOD. Double; rich royal purple with yellow center.

PURPLE AND GOLD. Double; purple and gold streaked.

PYRAMID. Double; dark violet with bright yellow blotch.

RED RIDINGHOOD. Single; red.

All Oriental Iris: Each, 75c; 3 for \$2.00.

BEARDLESS IRIS (Siberian Iris)

75c each; 3 for \$2.00.

CAESAR. Dark red-purple.

CAESAR'S BROTHER. New blue; fine.

DISTINCTION. Speckled blue and white.

EMPEROR. Dark blue.

PERRY'S BLUE. One of the best light blues.

WHITE DOVE. Beautiful large white.



Garden Iris

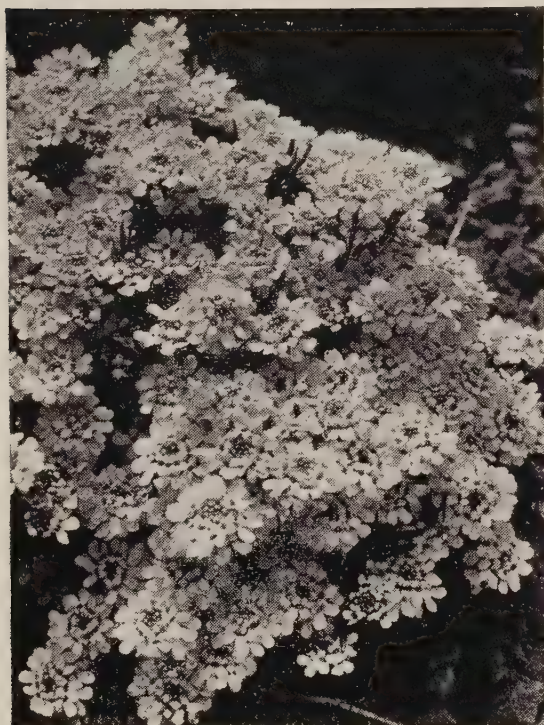
*IBERIS - Hardy Candytuft

LITTLE GEM. A perfect gem of very dwarf habit, not over 6 inches high, with masses of white flowers in May.

PURITY. (Cistus.) A hardy new Candytuft of merit. The large, attractive flowers are pure white. Very free bloomer and compact grower only 6 inches high. Comes into bloom in late April and May. Truly a gem for the rock garden and an excellent low border plant for edging. Each, \$1.00; 3 for \$2.00; 10 for \$6.00.

SEMPERVIRENS. Dwarf. Pure white flowers in June. Its uniform neat habit makes it one of our best rock or edging plants.

SNOWFLAKE. Large, pure white flowers on dwarf plants. Each, 80c; 3 for \$1.60; 10 for \$5.00.



Iberis Border

LUPINUS - Lupine

RUSSELL HYBRIDS. An extraordinary new strain noted for its pastel colors. 3 for \$2.00; 10 for \$6.00.

LYTHRUM

MORDEN'S PINK. 2 to 2½ ft. Masses of rose-pink flowers on narrow spikes. Profuse and continuous bloomer from June to September. Excellent for cutting. A hardy variety growing in full sun or partial shade. Each, 90c; 3 for \$2.25.

MERTENSIA

VIRGINICA (Virginia Bluebells). The loveliest of all blue spring-flowering plants. Plant them in broad masses with Daffodils. 15 inches. 3 for \$1.25; 10 for \$4.00; 100 for \$35.00.

MONARDA - Bergamot

CAMBRIDGE SCARLET (Oswego Tea). Crimson-scarlet. Should be in all herb gardens.

SALMON QUEEN. A pleasing shade of salmon.

All Monarda: Each, 70c; 3 for \$1.30; 10 for \$4.00.

MYOSOTIS

Forget-Me-Not

PALUSTRIS SEMPERFLORENS. Perpetual-flowering Forget-Me-Not. Blue with a yellow throat. 9 inches. 3 for \$1.30; 10 for \$4.00.

NEPETA - Catnip

MUSSINI. A compact grower forming tufts of small violet-blue flowers during July and August. 3 for \$1.60; 10 for \$5.00.

SIX HILLS GIANT. Masses of strong lavender-blue flowers in late August. 3 for \$1.60; 10 for \$5.00.

For a Spectacular Show of Color, Plant Oriental Poppies in August and Sept.

PAPAVER

Oriental Poppies

Poppies are dug and shipped in fall only; no spring deliveries.

For dazzling barbaric splendor, the great Oriental Poppies are absolutely unrivaled. Standing out in bold relief, they command attention and admiration. The prevailing color is a vivid orange-scarlet with large black blotches at the base of the petals, and a great mass of bluish black stamens in the heart of the large, cup-shaped flowers.

September and October are fine months to plant Poppies. Given reasonably rich soil and a light winter covering, these strong field-grown plants will be sturdy and free flowering next spring.

All Oriental Poppies unless otherwise noted: Each, 80c; 3 of one variety, \$1.60; 10 for \$5.00.

BARR'S WHITE. Large, pure white flowers with purplish black spots. A free blooming and healthy plant. Each 90c; 3 for \$2.25; 10 for \$6.50.

BEAUTY OF LIVERMORE. The finest dark crimson with black blotch. Free bloomer.

CAVALIER. Crinkly, deep scarlet-red flowers. Strong grower and free in bloom.

GOLD OF OPHIR. Golden orange, approaching true gold.

HENRI CAYEUX IMPROVED. Old rose shading to burgundy. Each, 90c; 3 for \$2.25.

JEANNE MAWSON. Sparkling Germanium-pink; large. A beauty.

JOYCE. Charming soft red flowers in great abundance on 48-inch stems. Sturdy growth.

LACHS KONIGEN. One of the finest, strongest growing deep salmon-pinks.

LULA A. NEELEY. Flowers of medium size, between spectrum-red and carmine in color. Good for cutting.

MAY SADLER. Large; salmon-pink with very large black blotches.

MRS. PERRY. Orange-apricot. Very fine.

ORANGE PERFECTION. Flame-red tinted orange. Strong growing and free flowering.

PURITY. Pure soft white without any spots or markings. Very fine. Each, 90c; 3 for \$2.25.

SALMON GLOW. Salmon-orange. First blooms are very double but later ones are only slightly so. Each, 90c; 3 for \$2.25 10 for \$6.50.

SNOWFLAME. A curious bicolor; the lower half of the flower is pure white and the upper half flame-orange. New and different. Each, 90c; 3 for \$2.25; 10 for \$6.50.

WURTEMBERGIA. Large; deep scarlet. Very striking.

WUNDERKIND. Truly a connoisseur's variety is this cerise colored Poppy. Each, \$1.25; 3 for \$3.00.



Oriental Poppies

Curtis Giant Poppies

FLAME. Extra large, flame-red blooms on very long stems. The largest of all Poppies.

FLESH-PINK. Flesh-pink overlaid lavender; large, tall stems. Best when planted in light shade to preserve the lavender tint.

SALMON-PINK. Large blooms. Medium height; heavy stems.

WATERMELON. Deep pink. Very outstanding.

All Curtis Giant Poppies: Each, \$1.10; any 3 for \$3.00; 10 for \$9.00.

Plant orders amounting to \$2.50 or more, no packing charge. Orders less than \$2.50, please add 25c packing charge.

Imagine These Lovely Flowers in Your Garden

PHLOX SUBULATA Moss Pink

Each, 70c; 3 for \$1.30; 10 for \$4.00.

ALBA. White.

BLUE EYES. Light blue.

BRIGHTNESS. New. Attractive bright pink.

ROSEA. Rose color.

SAMPSON. New. Deep rose with crimson center, distinct and lovely. Also offered under name of Sensation.

VIVID. A compact and showy grower with fiery rose flowers.



Phlox Subulata

MISCELLANEOUS HARDY PHLOX

Each, 80c; 3 for \$1.60; 10 for \$5.00.

CAMLA. An English novelty. The large flowers are glistening pink. Blooms again in the fall.

DIVARICATA. Our beautiful blue native Phlox. Does well in the shade.

PLATYCODON Balloon Flower

GRANDIFLORUM. Deep blue, cupped, star-shaped flowers.

GRANDIFLORUM MARIESI. 18 in. A useful dwarf variety for the foreground of the border. Blue.

GRANDIFLORUM MARIESI ALBA. A white form of the above.

All Platycodons: Each, 70c;
3 of one variety, \$1.30; 10 for \$4.00.

GRANDIFLORUM FL.-PL. A very desirable form, quite double and free flowering. Blue. Each, \$1.00; 3 for \$2.25.

* PLUMBAGO - Leadwort

LARPENTAE. Plant of dwarf, spreading habit, growing 6 to 8 inches high, covered with deep blue flowers. Each, 75c; 3 for \$1.60; 10 for \$5.00.

POLEMONIUM

BLUE PEARL. Feathery foliage and dense masses of bell-like, lavender-blue flowers. 8 to 10 in. April, May. Each, 75c; 3 for \$1.60; 10 for \$5.00.

Plant orders amounting to \$2.50 or more, no packing charge. Orders less than \$2.50, please add 25c packing charge.

PRIMULA, HARDY

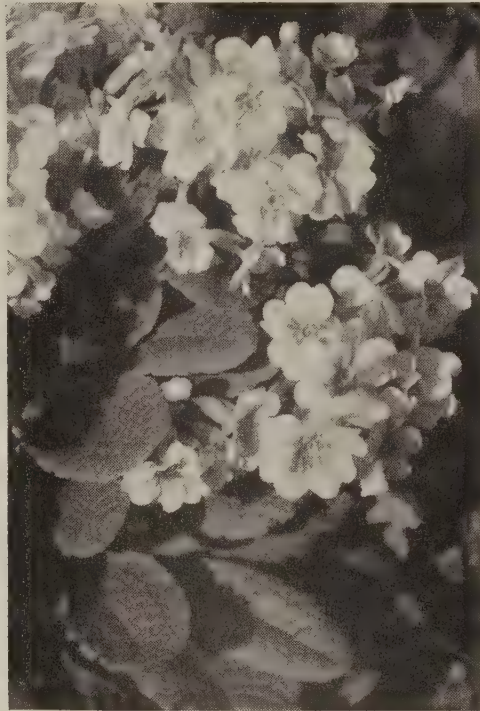
ACAULIS, BLUE SHADES. Large, single flowers in various shades of blue on strong stems.

MUNSTEAD GIANTS, MIXED. A magnificent strain of bunch Primroses, with flowers of large size in wonderful shades of yellow, from cream to rich orange.

RED SHADES. The above strain in a variety of red hues.

YELLOW SHADES. Yellow varieties of the Munstead Strain.

All Primulas: Each, 75c;
3 for \$1.60; 10 for \$5.00.



Primula, Munstead's Giant

PULMONARIA - Lungwort

ANGUSTIFOLIA AZUREA (Blue Cowslip). Grows about 1 foot high and is one of the first to bloom in early spring. Flowers are a deep Gentian-blue. Each, 75c; 3 for \$1.60; 10 for \$5.50.

RUDBECKIA

PURPUREA, THE KING. A crimson-red form that can be combined effectively with White Lustre. Each, \$1.00; 3 for \$2.75.

WHITE LUSTRE. This new Rudbeckia we feel confident will take its place as an important addition in many perennial gardens. You can count on White Lustre to reach 3 feet in height. Blooms freely on sturdy stems from late June to September. Each, \$1.00; 3 for \$2.75.

SEDUM

SPECTABILE. A pretty, erect growing variety with broad, light green foliage and immense heads of showy, rose colored flowers during the autumn. 1½ feet.

SPECTABILE, BRILLIANT. A rich colored form of the above, being bright Amaranth-red.

Above Sedums: Each, 65c; 3 for \$1.30; 10 for \$4.00.

THALICTRUM Meadow Rue

ADIANTIFOLIUM. A beautiful variety with foliage like the Maidenhair Fern and miniature white flowers in June and July. 1½ to 2 ft. 3 for \$1.30; 10 for \$4.00.

LAVENDER MIST. Large loose flower panicles of lavender-purple. Each, \$1.00; 3 for \$2.25.

VERONICA - Speedwell

BLUE SPIRE. A hybrid of *V. Longifolia Subsessilis* and *V. Spicata* which has retained the glorious dark color of *Subsessilis*. Each, 75c; 3 for \$2.00; 10 for \$5.00.

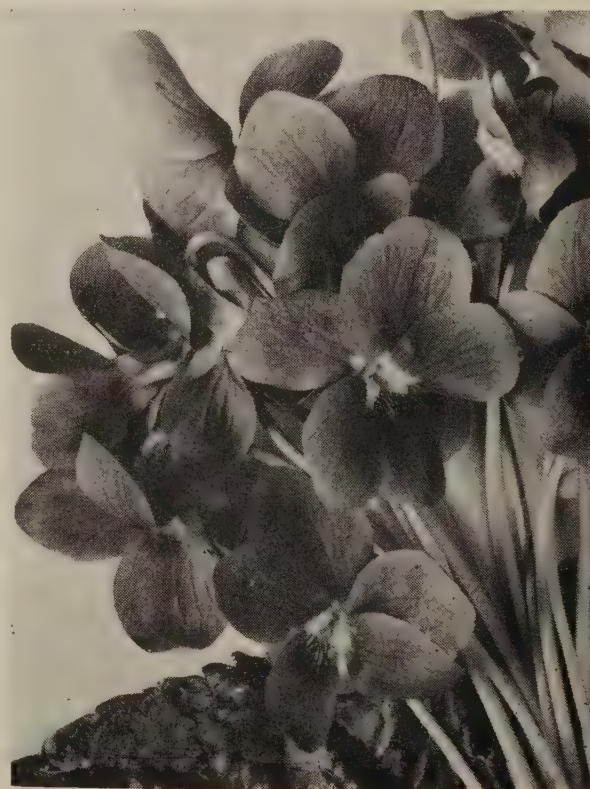
***INCANA.** Bright silvery foliage with spikes of amethyst-blue flowers during July and August. 1 ft. Each, 65c; 3 for \$1.30; 10 for \$4.00.

LONGIFOLIA SUBSESSILIS (Japanese Speedwell). The handsomest blue-flowered plant we know, growing to a height of 2 feet and completely studded with spikes of blue flowers; fine for cutting. August-October. Each, 75c; 3 for \$2.00; 10 for \$5.00.

***RUPESTRIS, TRUE BLUE.** Literally covers itself with blossoms of intense blue during June and July. 1 ft. Each, 75c; 3 for \$1.75; 10 for \$5.00.

VIOLA ODORATA Sweet Violet

ROYAL ROBE. A distinct addition to the Violet family that deserves a place in your shady rock garden or as a ground cover. Flowers are a lustrous shade of violet-blue. A dozen of these plants will furnish quantities of bloom during early winter and early spring, a time when cut flowers are highly prized. Each, 75c; 3 for \$1.60; 10 for \$4.00.



Viola Odorata, Royal Robe

HENRY F. MICHELL CO.

5

STUNNING NEW
PERSONALITIES
Iris Adaptions
by
MICHELL'S

This
Impressive
Collection of
5 Choice
Rainbow Iris
\$3.00



Cheerio
50c each



Clara Noyes
50c each



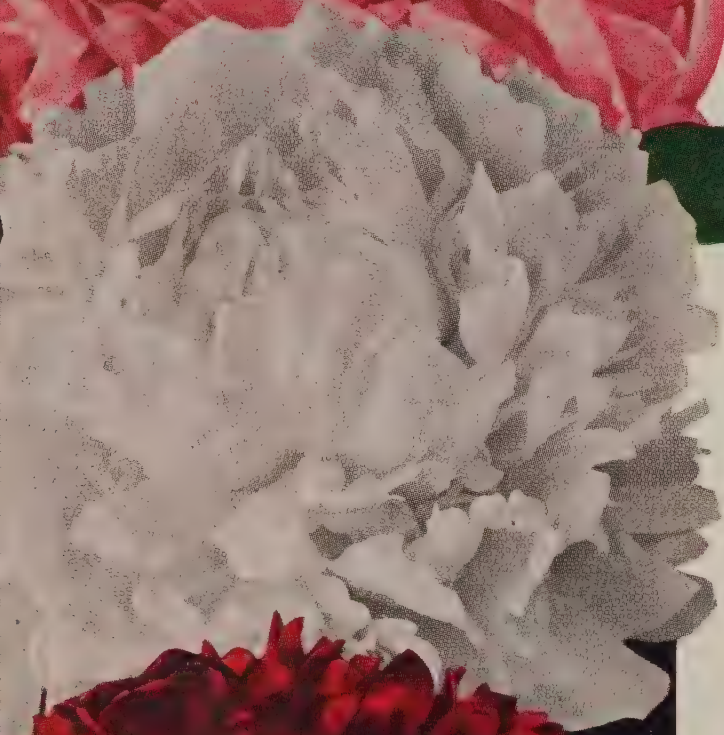
Black Wings
50c each

The New Wabash—\$1.00 each

The Lovely Golden Chestnut Hill Iris—\$1.00 each



Michell's Finest Exhibition Peonies



Karl Rosenfield
\$1.00 each; 3 for \$2.75

For Full Description of These Better
Peonies, See Page 23



Top: Walter Faxon—\$2.00 each
Center: Alice Harding—\$3.50 each
Bottom: Philippe Rivoire—\$3.50 each

Constance—\$2.00 each; 3 for \$5.50

Michell's Giant-Flowering Peonies

Our Peonies are strong, 3- to 5-eye divisions. A pleasing combination is to use Daffodils and hardy Lilies among the Peony group, to give color in the border and garden in spring, summer and fall.

RECOMMENDATIONS FOR PLANTING: The ground should be well prepared to a depth of 12 inches. Incorporate coarse bonemeal and avoid any animal manure near the roots. When planting lay the roots in their natural position with the eyes about 2 inches below the surface. Cover with salt hay after the ground is frozen.

SHIPPING SEASON: SEPTEMBER UNTIL GROUND IS FROZEN.

Pink and Rose Shades

- CORNELIA SHAYLOR.** Shell-pink. A fine late variety. \$2.00 ea.; 3 for \$5.50.
- DENIS DEBATE.** A splendid show flower of salmon-pink. It is of medium size, mildly fragrant, with good stems and foliage. Desirable for cutting. Each, \$3.00; 3 for \$8.25.
- EDULIS SUPERBA.** The only Peony offered here that is rated under 8, and there is no reason why it should carry this low rating, for it is really a good Peony. Early, free flowering, and a fine cut flower in the dark pink class. Each, \$1.00; 3 for \$2.75.
- ELISA.** Hydrangea-pink. Each, \$1.50; 3 for \$3.75.
- ELISE RENAULT.** An unusual shade of lilac in Peonies. Should be grown in all Peony borders; late. Each, \$2.50; 3 for \$6.75.
- EXQUISITE.** Rosy pink, fragrant, tall. Each, \$1.50; 3 for \$3.75.
- FAUSTINE.** Pale pink. Each, \$1.50; 3 for \$3.75.
- FLORENCE MACBETH.** Large; light pink. Each, \$1.50; 3 for \$3.75.
- FLOWERET OF EDEN.** Mauve-pink. Each, \$1.50; 3 for \$3.75.
- GLORIANA.** Large; pink. A good flower for the border. \$2.00 ea.; 3 for \$5.50.
- HAZEL KINNEY.** Clear Hydrangea-pink; rose type. Very distinct in color and form, and a most desirable sort. Each, \$2.50; 3 for \$6.75.
- JUDGE BERRY.** Delicate pink; early. Very large. Each, \$1.00; 3 for \$2.75.
- LADY ALEXANDRA DUFF.** Immense flowers, four to six on a stem. Beautiful flesh-pink with golden anthers. Each, \$1.50; 3 for \$3.75.
- MARIE CROUSSE.** A most lovely variety. Tall stem and beautifully formed flowers of a charming shade of shell-pink. Fine. Each, \$1.00; 3 for \$2.75.
- MARTHA BULLOCH.** Rose-pink; large flower. Each, \$1.50; 3 for \$3.75.
- MISS MINNEAPOLIS.** New. Pale pink. Very attractive. A popular exhibition variety. Each, \$5.00.
- MONS. JULES ELIE.** A large, early-flowering Peony. One of the very best for cutting. Pale lilac-rose with an attractive silvery reflex. Each, \$1.00; 3 for \$2.75.
- NANCY DOLMAN.** Pink. Tall variety with large blooms. Each, \$2.50; 3 for \$6.75.
- PHYLLIS KELWAY.** Very large, loosely built, rose-pink bloom; center petals are intermingled with bright golden stamens. Stiff stems with abundant foliage. Fine. Each, \$2.00; 3 for \$5.50.
- PINK OPAL.** Light pink; good large variety. Late. Each, \$2.00; 3 for \$5.50.
- SARAH BERNHARDT.** Very large, late, rose-pink flowers. One of the very best for exhibition and cutting on account of its perfectly formed flowers and graceful stems. Blooms very freely. Each, \$1.00; 3 for \$2.75.
- THERESE.** Soft pink—the best pink. Develops a high crown; strong grower and very free bloomer. One of the best midseason sorts. Each, \$2.00; 3 for \$5.50.

WALTER FAXON. Vivid salmon-pink, often called salmon-rose. A good show flower. It is of medium size, mildly fragrant, with good stems and foliage. (See color plate, page 22.) Each, \$2.00; 3 for \$5.50.

Red and Crimson Shades

- BENJAMIN FRANKLIN.** Dark crimson; tall. Each, \$1.00; 3 for \$2.75.
- CHERRY HILL.** Deep garnet; early; tall. Each, \$1.50.
- FELIX CROUSSE.** Late midseason red Peony. Probably the largest seller of all in its color. Each, \$1.00.
- FRANCOIS ROUSSEAU.** Dark red; early. Each, \$1.00; 3 for \$2.75.
- GROVER CLEVELAND.** Dark crimson. Each, \$1.00; 3 for \$2.75.
- HENRY WEBSTER.** Large red; late. Each, \$2.50; 3 for \$6.75.
- KARL ROSENFELD.** Tall; midseason. Globular, semi-rose type flowers of bright crimson. (See color plate, page 22.) Each, \$1.00; 3 for \$2.75.
- LONGFELLOW.** One of the most popular red varieties because of its distinct fadeless color and general dependability, both for cutting and garden decoration. Comes into bloom in early midseason. Excellent foliage and long, stiff stems. Each, \$1.50; 3 for \$3.75.
- MME. GAUDICHAU.** Dark crimson. Each, \$2.00; 3 for \$5.50.
- ONONDAGA.** New. Tall red, an outstanding variety. Each, \$7.50.
- PHILIPPE RIVOIRE.** Early flowering. Dark crimson; very symmetrical and with a rich rose scent. (See color plate, page 22.) Each, \$3.50.
- RICHARD CARVEL.** Bright crimson. Large and early. Each, \$1.00; 3 for \$2.75.

White and Cream Shades

- ALICE HARDING.** Cream-white. A first-class Peony. (See color plate, page 22.) Each, \$3.50.
- ALSACE-LORRAINE.** Creamy white, very large, perfectly formed flowers. Late. Each, \$1.50; 3 for \$3.75.
- BALL O' COTTON.** Pure white. Each, \$1.50; 3 for \$3.75.
- BARONESS SCHROEDER.** A tall midseason Peony with large, globular, flesh-white blooms. Each, \$1.50; 3 for \$3.75.
- CRYSTOLA.** Pure crystal-white, very large and full. Strong growth. Each, \$2.00; 3 for \$5.50.
- DUCHESS DE NEMOURS.** White. An old and popular variety. Each, \$1.00; 3 for \$2.75.
- DULUTH.** Pure white, useful as a cut flower. Late. Each, \$3.00; 3 for \$8.25.
- FESTIVA MAXIMA.** One of the oldest of the white Peonies and some say the very best. A sure bloomer; early. Each, \$1.00; 3 for \$2.75.
- FRANCES WILLARD.** Rose type, opening exquisite blush-white. Each, \$1.50; 3 for \$3.75.
- KELWAY'S GLORIOUS.** Creamy white with slight flecks of crimson. Very fragrant and considered one of the very best white Peonies. Late midseason. Each, \$3.00; 3 for \$8.25.

- LE CYGNE.** Very large, perfectly formed flower; the finest white. Received the highest rating of any Peony. Each, \$3.00; 3 for \$8.25.
- MRS. A. M. BRAND.** Purest white. Each, \$2.50; 3 for \$6.75.
- MRS EDWARD HARDING.** Very early, white flowers. Resembles a large Gardenia. Each, \$1.50; 3 for \$3.75.
- MYRTLE GENTRY.** Blush-white, very desirable. Each, \$3.00; 3 for \$8.25.
- MINNIE SHAYLOR.** Semi-double white. One of the most popular among Peony growers. Each, \$2.00; 3 for \$5.50.
- PRISCILLA ALDEN.** Warm white; early. Each, \$3.00; 3 for \$8.25.
- SARAH K. THURLOW.** Large white; late. Each, \$2.00; 3 for \$5.50.
- SOLANGE.** Cream; very late. Each, \$1.50; 3 for \$3.75.

Yellow Shades

- BETTY BLOSSOM.** Soft yellow effect. Each, \$2.00; 3 for \$5.50.
- LAURA DESERT.** Canary-yellow. Each, \$2.00; 3 for \$5.50.
- PRIMEVERE.** A most attractive midseason variety with a sulphur-yellow center and creamy guard petals. Each, \$2.00; 3 for \$5.50.

Single Varieties

- HELEN.** Shell-pink; tall and erect. A very pleasing Peony. Each, \$3.00; 3 for \$8.25.
- JEANNE ERNOULD.** A new apple-blossom-pink, of fine quality and beautifully formed. Tall, free flowering, and one of the finest of all single pink Peonies. Each, \$2.00; 3 for \$5.50.
- LE JOUR.** Extra fine white, with two rows of very long, wide overlapping petals. The center has a broad ring of golden yellow stamens surrounding a group of reddish carpels. It is considered the finest of all single white Peonies. Each, \$2.00; 3 for \$5.50.
- MINNEHAHA.** Very early. Bright cherry-red with center tufts of clear golden stamens. Each, \$1.00; 3 for \$2.75.
- NELLIE.** Very fine pink-blush, introduced by the world-famous Peony specialist, Kelway. Each, \$1.50; 3 for \$3.75.
- PRIDE OF LANGPORT.** Large rose-pink; midseason. Carpels smooth, tips red; disk distinct, pink. Plant large, spreading; flowers numerous and held high above the foliage. Each, \$1.50; 3 for \$3.75.
- PRINCESS MATILDA.** Large Tyrian pink; early. Plant medium size, spreading; flowers numerous. Each, \$1.50; 3 for \$3.75.

Imperial or Anemone-Flowered Peonies

- ALTAR CANDLES.** Large; light blush-pink. Midseason. Each, \$1.50; 3 for \$3.75.
- CATHEDRAL.** Large; Aster-purple. Midseason. Each, \$1.50; 3 for \$3.75.
- CONSTANCE.** Pink, yellow center. Each, \$2.00; 3 for \$5.50.
- GLORY.** Light Tyrian rose. Each, \$2.00; 3 for \$5.50.
- KNIGHT OF THE THISTLE.** Large; crimson with a purple sheen. Each, \$1.50; 3 for \$3.75.

Plant orders amounting to \$2.50 or more, no packing charge. Orders less than \$2.50, please add 25c packing charge.

Everblooming Hybrid Tea Roses

Everblooming Roses produce beautiful flowers over a long season, from about ten weeks after they are planted in spring until late frosts. Those planted in the fall produce their finest blooms early in the next summer and continue throughout the season. Practically all Everblooming Hybrid Tea Roses are fragrant at some time of the day. Most of them are hardy all over the United States if protected in winter.

From the long list of varieties in commerce we offer those that have survived the test for plant vigor and good blooming habit in most parts of the United States.

Price: \$1.50 each. Collection of 6 varieties—Star marked—No. 12—\$7.50—Your own selection, 12 for \$15.00.

CALEDONIA. Large, very double, high-centered flower of pure white, borne singly on long, strong stem. Average plant; leathery, dark green foliage.

***CHRISTOPHER STONE.** Bright velvety scarlet-red flowers of good form. Its golden stamens appear as the bloom opens. Damask fragrance. Vigorous, upright grower, free flowering, and does not appear to be troubled by heat.

CONTRAST. An excellent bicolored Rose that catches the eye; the reverse of the petals is milk-white with basal bronze shading, the upper part a superb shade of orange-rose; grand for cutting purposes.

CROWN OF GOLD. Golden yellow flowers of very fine form, lasting exceptionally well under trying hot conditions. One of the best yellows.

ETOILE DE HOLLANDE. Large crimson flowers with velvety finish and especially fine fragrance. Branching plants with very large, healthy foliage. One of the finest red Roses. The very large, fragrant flowers are superb when in the half-open state.

***GOLDEN SASTAGO.** Buttercup-yellow. Strong grower.

GOLDEN RAPTURE. Golden yellow. Bud pointed; flowers very large, clear golden yellow with old Rose fragrance. Foliage large and glossy.

GRENOBLE. Long-stemmed, scarlet-red bloom, admirable for cutting. Large sized, double Rose.

JOANNA HILL. Cream-yellow with orange center. Very pleasing in bud form. A popular cutting variety.

***KAISERIN AUGUSTE VIKTORIA.** Creamy buds and perfect, snow-white blooms tinted lemon-yellow at center; fragrant. Medium, upright growth.

MISS ROWENA THOM. Enormous buds and blooms of fiery rose and mauve, shaded with old gold at the center, borne on long, strong stems.

McGREGDY'S IVORY. Lovely large flowers of beautiful double form. The color is soft delicate creamy white merging into yellow at the base.

PINK DAWN. Pink. A handsome deep rose-pink flower, opening to lively pink with an orange base; sweetly fragrant. Vigorous, upright habit. One of the best modern pink Roses.

MRS. E. P. THOM. Slender yellow buds and large, well shaped blooms of bright canary-yellow, deepest in center. Blooms very freely.

MRS. LOWELL SWISHER. Large, beautifully pointed buds and gorgeous flowers of salmon-pink at the edges. Strong grower and free bloomer.

***POINSETTIA.** Lovely, well formed, long buds and vividly colored flowers of poinsettia-scarlet, which suggested the name.

PRESIDENT MACIA. Pink. Imagine the longest Rosebud you ever saw, of a lovely shade of pink, marked with heavy veins of darker pink, and each of the perfect buds on a splendid stem for cutting. When open, the face of the petals is pale flesh, warmed with a yellow flush toward the base, the reverse the rich pink of the buds. Fruity scent.

***PRESIDENT HERBERT HOOVER.** The flowers are a charming combination of cerise-pink, flame, scarlet and yellow with broad, thick petals; very fragrant. The clean, handsome foliage is an added attraction.

RADIANCE. The two-tone pink, cupped flowers have a pungent, true Rose fragrance. In continuous demand on account of its vigorous, healthy growth and freedom of bloom.

RED RADIANCE. Counterpart of Radiance from which it is a sport, possessing all of the good points of that variety, but differing in color, which is bright cerise-red.

ROSE MARIE. Clear rose-pink; fine buds and flowers. Blooms constantly.

SOEUR THERESE. Candelabras (not clusters) of five to fifteen flowers forming on top of sturdy canes that hold the blooms erect. Buds are marked with carmine but the open blooms are clear yellow.

TALISMAN. Its combination of apricot, gold, and deep rose-pink gives it a glittering mass of color over a long period of time.

***THE DOCTOR.** This magnificent Howard & Smith Rose is internationally recognized as one of the outstanding new Roses. We regard this Rose as one of the best; a variety which will be greatly sought after when better known. The buds are long and pointed, expand to a simply enormous bloom in their fully developed state. The color is an exquisite silvery pink, uniform in color both in bud and open flower, with a fragrance so intense that it can be detected many yards away.

Novelty TEA ROSES Everblooming

Here are presented some of the best of the newest Roses, the product of hybridizers the world over. We recommend them for the thrill they will give you in your own garden.

Price: \$2.00 each. Collection of 4 varieties, your selection (Peace excepted), \$7.50.

ANZAC. Has all the qualifications of a winner: vigor, ruggedness and dependability. Anzac, like Douglas MacArthur, needs no coddling. Buds of coral washed with gold unfold into perfectly formed flowers.

BUTTERSCOTCH. (Pat. No. 613.) The length and grace of the petals are outstanding. Outside is soft, pale orange-yellow; inside lemon-chrome at base, changing to pale yellow-orange, penciled lightly with orange-buff.

CALIFORNIA. (Pat. No. 449.) A sensational novelty. Color is a glorious shade of ruddy orange toned with saffron-yellow. Growth vigorous, with healthy, glossy green foliage.

CARRIE JACOBS BOND. A Rose that will thrill you with its exquisite deep rich rose shade.

CHARLOTTE ARMSTRONG. HT. (W. E. Lammerts, 1940.) (Pat. No. 455.) Red. The color is warm red in the bud opening to cerise in hot weather and spectrum-red in cooler weather. Its long and pointed bud opens into a long-lasting, fragrant flower 3 to 4 inches in diameter.

CRIMSON GLORY. (Pat. No. 105.) Glorious in its perfect form, its size, and its fragrance. Deep vivid crimson, shaded oxblood-red and finished with a velvety nap. Still "tops" among red Roses. Flowers late into the fall.

COMMANDO. The lovely flower is a marvel of delicacy. Huge flowers of the most delicate salmon-pink with brilliant yellow towards the base of the petals, lighting up the effect with incandescence. A fine new variety worthy of a place in every garden.

DOUGLAS MacARTHUR. (Pat. No. 581.) A strong growing variety with good, healthy foliage and the rugged qualities lacking in so many Hybrid Tea Roses. The color is somewhat difficult to describe: rose, gold and salmon are blended into a fine tone.

EDITH WILLKIE. (Pat. No. 500.) The deep jasper-red flower bud is high and pointed. As the petals unfurl they show an inside surface of vivid shrimp-pink with lemon-yellow base.

FRED EDMUNDS. HT. (Mallerin.) (Pat. No. 731.) Regional Award winner. Burnt-orange buds open to 50-petaled blooms of vivid, glowing copper-orange, one of the most brilliant and beautiful of Roses. Fruity fragrance; very shiny foliage.

GOOD NEWS. HT. (Meiland, 1940.) (Pat. No. 426.) Peach-pink. Full, perfectly formed, tea scented flowers of peach-pink changing to silvery pink. Vigorous grower and constant bloomer.

HEART'S DESIRE. (Pat. No. 501.) In this new Gold Medal variety your heart's desire for a red Rose bordering on perfection will be attained. Large and double, with wonderful fragrance.

MME. CHIANG KAI-SHEK. (Pat. No. 664.) This Rose has been named in honor of the First Lady of China. Long, spiral buds unfurl slowly, culminating in light clear yellow flowers of perfect proportions.

MIRANDY. (Pat. No. 632.) Large, very double, rich maroon-red blooms. Among the finest red Roses in the world. The plant is strong, free branching, with heavy, stout stems, and keeps producing its glorious flowers freely all season against a background of dark green foliage.

PEACE. (Pat. No. 591.) Very large, full-petaled flowers of soft yellow suffused and edged pink. Distinctive and charming. A much-sought-for Rose.

PEARL HARBOR. (Pat. No. 637.) Flowers are borne on vigorous canes without thorns. The buds are long-pointed. The upper surface of the petals is delicate shell-pink with golden bronze shading at base; the reverse is vivid Tyrian-rose.

SANTA ANITA. (Pat. No. 539.) A lovely Rose. Perfectly formed, long-pointed buds unfold into beautiful flowers of crystal clear peach-blossom-pink.

ROSES BY MICHELL—A Garden Spectacle Loved by All Strong Rooted Two Year Bushes—PLANT THIS FALL

FLORIBUNDA

Large-Flowering Polyantha Varieties

CECILE BRUNNER. Improved. Charming light pink flowers, shading into yellow at the base. Dainty in size and lovely in color. It is the perfect Rose for nosegays and corsages, also splendid for borders and massing. Each, \$1.50.

CHERIO. Superb in every respect. A Rose of outstanding merit whether used for mass planting in beds or borders or as an accent in the garden, carrying a super-abundance of brilliant double flowers, gracefully arranged. The petals are clear mallow-pink shading to Tyrian rose at the base, with the reverse luminous rose-madder. Each, \$1.50.

FLORADORA. (Pat. Pending.) For scintillating brilliance this new Rose surpasses all others. The color is bright cinnabar with shades of scarlet and Geranium-red. It can only be matched by the most brilliant Azaleas which bloom for two weeks in the spring while the vivid, exciting blooms of this new Rose are borne continuously for five months in the year. Each, \$1.75.

FLUFFY RUFFLES. A charming large-flowered cluster Rose, silvery pink, semi-double, in compact trusses. Each, \$1.50.

GLORIOUS. The extremely vigorous bushes are well branched, with strong canes that divide into many open sprays bearing informal clusters of deep vermilion buds, expanding into semi-double flowers of Tyrian rose. The flowers cover the plants. It would be impossible to surpass the new Rose Glorious for the purpose of bordering walks or drives, for mass planting or grouping; in fact, for any situation where a wealth of glorious color is desired. Each, \$1.75.

MING TOY. A new Polyantha Rose. The fifty or more petals are so precisely placed that the high-centered, brilliant rose flowers may be fairly compared with the finest Camellias in form. The rugged plants abound with health, which accounts for the constant production of bloom. This energy is manifested in the cut sprays as well as the plants. Each, \$1.75.

ORANGE TRIUMPH. Large, double, scarlet-orange flowers, combined with good, glossy foliage. Each, \$1.50.

RED RIPPLES. A joyous color, an intense scintillating red that seems to sparkle on the wavy-petaled flowers. Each, \$1.50.

ROSENELFE. Graceful clusters of dainty La-France-pink flowers superbly suited for cutting and table ornament. The handsomely shaped, small buds or open blooms lend themselves perfectly to any kind of decoration. In the garden they never fail to draw attention. Color holds up well in hottest sun. A fine grower, with excellent foliage. One of the best in this group. Each, \$1.50.

WHITE FINCH. (Pat. No. 277.) The fine clusters of flowers are pure white. Especially valuable for contrasts such as in combination with Ming Toy or Floradora. Each, \$1.50.

Hardy Climbing and Rambler Roses

The Ramblers, or small-flowered cluster type, should have the old canes removed at the base as soon as they finish blooming, training the new canes into place for next year's bloom.

BLAZE. (Pat. No. 10.) Scarlet-crimson blooms. Each, \$1.75.

DOUBLOONS. (Pat. No. 152.) Here is a gloriously lovely climbing yellow Rose, noted for hardiness and vigorous, healthy growth, and furnished with dark green, leathery foliage. The shapely buds open to large, firm-textured blooms of saffron-yellow with clean, spicy fragrance. Each, \$1.75.

EASLEA'S GOLDEN RAMBLER. This is without question the most outstanding yellow climbing Rose. The blooms are arranged in large clusters enhanced by their pleasing rich fragrance. Each, \$1.75.

GOLD RUSH. A vigorous climber, producing masses of handsome yellow flowers; has nice foliage and unlike most all other hardy climbers, it will produce flowers on its new growth for the season. We predict a great future for this new variety. Each, \$1.75.

MARY WALLACE. Large, pink flowers with a luminous sheen. Strong growth. Each, \$1.75.



MME. GREGOIRE STAECHELIN (The Spanish Beauty). A vigorous grower, with good foliage. Shapely, semi-double, fragrant flowers of an iridescent pink tipped with crimson. Each, \$1.75.

NEW DAWN. (Pat. No. 1.) Blush-pink. Everblooming. Each, \$1.75.

PAUL'S SCARLET CLIMBER. No other Rose in any class can compare with it for brilliancy of color, which is a vivid scarlet maintained without burning or bleaching until the petals fall. Dormant, \$1.50 each.

SILVER MOON. Midseason white. Great silvery white, semi-double blooms, with a foil of dark leathery foliage. Each, \$1.50.

Large-Flowered Floribunda Roses 2 New Rosette Cluster-Type Introductions

Pink Rosette

The open sprays bearing many pure peach-pink buds with fifty or more shell-like petals, are streamlined and unfold to open flowers of perfect proportion and form.

Crimson Rosette

Clusters of brilliant red Roses cover the dark green, heavy foliaged bushes in a continuous display of velvety red.

These new introductions are a distinctive type from the ordinary small-flowered Polyanthas. For color illustration and detailed description, see back inside cover. Price: \$2.00 each; 3 for \$5.50.

How to Plant Roses

Dig the hole large enough to accommodate the root system without crowding. Remove any bruised or broken roots.

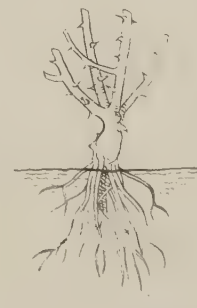
Spread out the root system and adjust the height so that the bud-union will be slightly below the natural ground level. Work the pulverized soil carefully around the roots so that no air spaces are left.

Fill in soil to cover the roots and firm. Fill the hole with water and allow to drain away before filling in with the remainder of the soil.

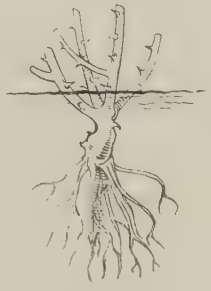
Mount soil high around the stems for protection until growth starts; then remove carefully.



Planted Correctly



Planted Wrong, Not Deep Enough



Planted Wrong, Too Deep

Fruits by Michell

That Tempt the Eye
and Appetite

PLUMS

The varieties Abundance and Burbank need cross pollinating; they will pollinate each other. Other varieties offered are self pollinating.

ABUNDANCE. A very productive, large variety of light cherry-red color. Aug.

BURBANK. Fruit round, cherry-red, with lilac bloom. Heavy bearer. Sept.

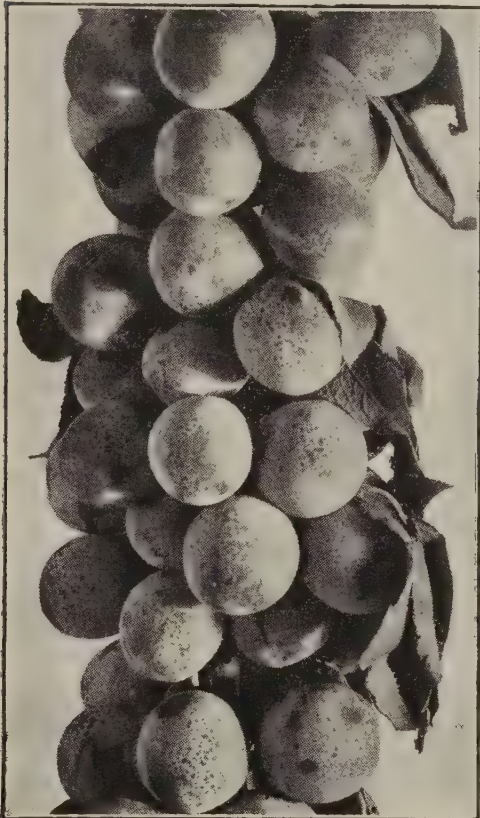
DIAMOND. Enormous, dark purple fruit with a beautiful bloom. Sept.

GREEN GAGE. Large, greenish, sweet fruit of good flavor. An excellent variety. Sept.

SHROPSHIRE DAMSON. Late. Medium sized fruit, produced in thick clusters or groups. Tree a strong grower and very productive of dark purple colored Plums. The popular old-fashioned Damson variety.

All Plum trees: 5 to 6 ft.,
\$3.00 each; \$33.50 per doz.

FRUIT TREES, besides being ornamental, provide fine quality tree-ripened fruit for your table.



Burbank Plum

PEARS

Most varieties of Pears are self unfruitful, or self incompatible, even though they bear excellent pollen. Duchesse d'Angouleme has proved to be a desirable pollinator for the other varieties that we offer. Bartlett and Seckel will not cross pollinate; use Duchesse d'Angouleme if either or both of the above two are being planted.

Summer Varieties

BARTLETT. An old favorite. Juicy, well flavored and a good bearer. Aug.

CLAPP'S FAVORITE. A fine large yellow variety stained red; flesh fine-grained. August.

Fall Varieties

ANJOU. Fruit large and handsome, yellow with red blush; flesh of good flavor. Late keeper. October.

DUCHESS D'ANGOULEME. Large; flesh buttery, rich and juicy. A good standard variety. Fine keeper. Oct.

KIEFFER. Late. Rather coarse-grained, but when well ripened is good for both eating and preserving. Good keeper. October.

SECKEL. A well known, dark brown, small variety; flesh very sweet and juicy. October.

All Pear trees: 5 to 6 ft.,
\$3.00 each; \$33.50 per doz.

APPLES

Apple varieties may be classified roughly as self fruitful, partially self fruitful, and self unfruitful. Delicious and Wealthy are two good self-pollinators. Include these varieties with others of your choice from the list below.

DELICIOUS. A good late variety with rosy red fruit of good size. Truly delicious.



Delicious Apple

GRIMES GOLDEN. Late. Good size; yellow, and of fine flavor.

JONATHAN. Winter. Fruit medium to large; brilliant red; flesh juicy, fine grained, tender and very highly flavored. Bears heavy crops every year, and comes into bearing early.

McINTOSH. Winter. Medium size; nearly covered with a bright red; flesh white, tender, juicy, sub-acid. Tree hardy, vigorous, and healthy.

ROME BEAUTY. Late. Yellow shaded red; solid and juicy.

STAYMAN'S WINESAP. The best winter variety. Large, juicy, semi-sweet. Fine for eating and cooking. Prolific.

WEALTHY. Late. Round, red; sweet and a good keeper.

YELLOW DELICIOUS. Winter. Tree comes into bearing early, producing heavy crops. Very thrifty, hardy, and a vigorous grower. A golden Apple which has won its fame as an outstanding commercial variety.

YELLOW TRANSPARENT. Early and desirable. Good color; juicy and semi-sweet.

CRAB APPLES

HYSLOP CRAB. Large, round, deep red fruit. The best variety for jelly. Sept.

All Apple and Crab Apple Trees:
5 to 6 ft., each, \$2.50; doz., \$27.50.

Special Quick-Crop Size: 6 to 7 ft.,
\$4.00 each.

Quintuplet Apple Trees

9/16 in. cal. and up.

The popular 5-N-1 Apple varieties on each tree: Anoka, Red Jonathan, Red Delicious, Yellow Delicious and Transparent. Each, \$6.00.

CHERRIES

Sweet Cherries need cross pollination; use two varieties. Sour Cherries are satisfactory when planted alone.

BLACK TARTARIAN. Sweet. Very large, black; rich and juicy.

EARLY RICHMOND. Sour. An early variety of medium size; dark red fruit. Early June.

MONTMORENCY. Sour. Large, dark red fruit, about 10 days later than Richmond.

NAPOLEON (Royal Ann). The best and most profitable yellow sweet Cherry. Flesh very firm, juicy, and delicious.

All Cherry trees: 4 to 5 ft.,
\$3.00 each; \$33.50 per doz.

Cherry Trees: Special offer fruiting size trees available fall, 1948. Please mark orders stock "E."

Lambert: Extra large, sweet, jet black. Very popular; midseason.

Napoleon (Royal Ann): Large, pale yellow, bright red cheek, sweet, excellent flavor, prolific bearer; midseason.

Windsor: Large, sweet, almost black, fine. Valuable late variety.

Yellow Spanish: Large, sweet, yellow with red tinge. One of the most beautiful and popular of the light colored Cherries. Heavy bearer. Midseason.

STRONG TREES

1 1/4-1 1/2 in. cal. \$3.75 each
1 1/2-2 in. cal. 5.00 each

PEACHES

Peach varieties are generally self fruitful, but J. H. Hale produces impotent pollen. For that reason it is desirable to interplant with varieties bearing potent pollen.

BELLE OF GEORGIA. White, red cheek; flesh white, of good flavor. Freestone. September.

CHAMPION. A large, handsome early white variety with red cheek; sweet and juicy. August.

ELBERTA. The standard market variety. Large; flesh yellow, juicy, and of high quality. A heavy bearer. Sept. 15th.

GOLDEN JUBILEE. Resembles Elberta. Skin yellow with red flesh; flesh golden yellow, juicy and sweet. Freestone. Early August.

HALE-HAVEN. Ripens two weeks before Elberta. Withstands cold temperatures; very hardy. A perfect freestone of extremely high color, yellow fleshed, large in size, good shipping qualities. Heavy bearer.

J. H. HALE. Larger than Elberta. Deep yellow with carmine blush; wonderful flavor. Stands shipping. Ripens about September 10th.

SALBERTA. Late. Large yellow freestone. Ripens about ten days to two weeks after Elberta. This new variety is being planted commercially in many Peach-growing sections.

All Peach trees: 3 1/2 to 4 ft.,
\$2.50 each; \$27.50 per doz.

Special Quick-Crop Size: 6 to 8 ft.,
\$4.00 each.

Small Fruits for Limited Spaces

BLUEBERRY

Plant in acid but well drained soil; space the plants 5 feet apart. The parent plants in our nursery have been inspected and found to be free of Blueberry "stunt disease." We offer the following varieties:

CONCORD, JERSEY, JUNE, RANCO-CAS, RUBEL.

	3 for	Doz.
12 to 15 in.	\$5.00	\$16.00
15 to 18 in.	5.25	18.00

BLACKBERRIES

ALFRED. For the home garden, Alfred is the ideal Blackberry. The bushes are loaded with tremendous berries, practically free from seeds, coreless and extremely juicy.

ELDORADO. Remarkably strong grower and an enormous producer of extra-size berries which are brilliant black and retain their color under all conditions. Very sweet and without core.

All Blackberries: Extra strong plants, Doz., \$3.00; 100, \$20.00.

THE NEW BOYSENBERRY

The Finest Vine Berry Yet Developed

A new hybrid vine berry developed from the Blackberry, Loganberry, and Raspberry.

The fruit, which is dark purple at first, becoming black when fully ripe, is of Blackberry form with berries averaging 1½ inches long, with occasional fruit an inch longer.

The flavor is distinctively its own but somewhat resembles the Raspberry; the sugar content is so high that no sugar is needed with ripe berries. 5 for \$1.50; 25 for \$5.50.

GRAPE VINES

CACO. Red. The most delicious of all Grapes and perfectly hardy. Bunch of good size, compact, and of good form. Rich in sugar, excellent in flavor. Vines very strong, vigorous growers, healthy and prolific. Each, \$1.00; 3 for \$2.75.

CATAWBA. Red. Delicious flavored; medium size berry.

CONCORD. Purple. The well known standard variety that succeeds wherever Grapes will grow.

DELAWARE. Light red with violet bloom. Bunches and berries are small but compactly set, sugary and delicious.

FREDONIA. Large black berry with heavy bloom. Clusters about medium in size. Very early; good quality; new and very promising.

MOORE'S EARLY. This is really an early Concord and is the standard early blue Grape. The vines are vigorous, healthy, and productive, bearing fruit of delicious quality.

NIAGARA. Light greenish white. An unusually strong grower. Bunches very large and compact. Berries large, semi-transparent; has very little pulp and is sweet to the center.

PORTLAND. White. The earliest of all Grapes. Large bunch and berry; flesh sweet, juicy and of fine flavor. A valuable early Grape for the home garden. Each, \$1.00; 3 for \$2.75.

All Grape Vines, except Caco and Portland: Two-year vines, each, 75c; doz., \$8.50.

RASPBERRIES

CUMBERLAND. Blackcap. The largest Raspberry known. Selected specimens measure an inch in diameter.

LATHAM. The finest red Raspberry to date. More productive than any other variety. The berries are very large, bright red, and of wonderful flavor.

NEWBURGH. Midseason. Vigorous grower, hardy, very productive. Fruit very large, firm; does not crumble. Precedes Latham a few days in ripening. An excellent shipper and keeper.

RANERE EVERBEARING. Brilliant red fruit of good size and excellent flavor; in fact, there is no good quality any of the regular varieties of Raspberries possess that is lacking in Ranere.

All Raspberries: Extra strong plants, 6 for \$1.75; doz., \$3.00; 25 for \$4.50.

STRAWBERRIES

Layer plants in all the standard varieties. 25 for \$1.50; 50 for \$2.50; 100 for \$4.00.

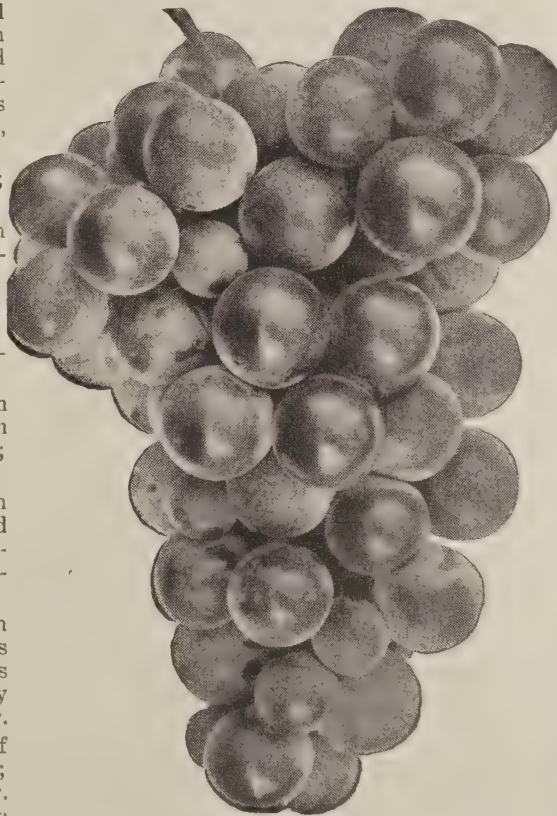
Everbearing varieties. 25 for \$2.50; 50 for \$4.50; 100 for \$8.00.

Pot-grown Strawberries will be available during summer months. For particulars see our spring catalog.

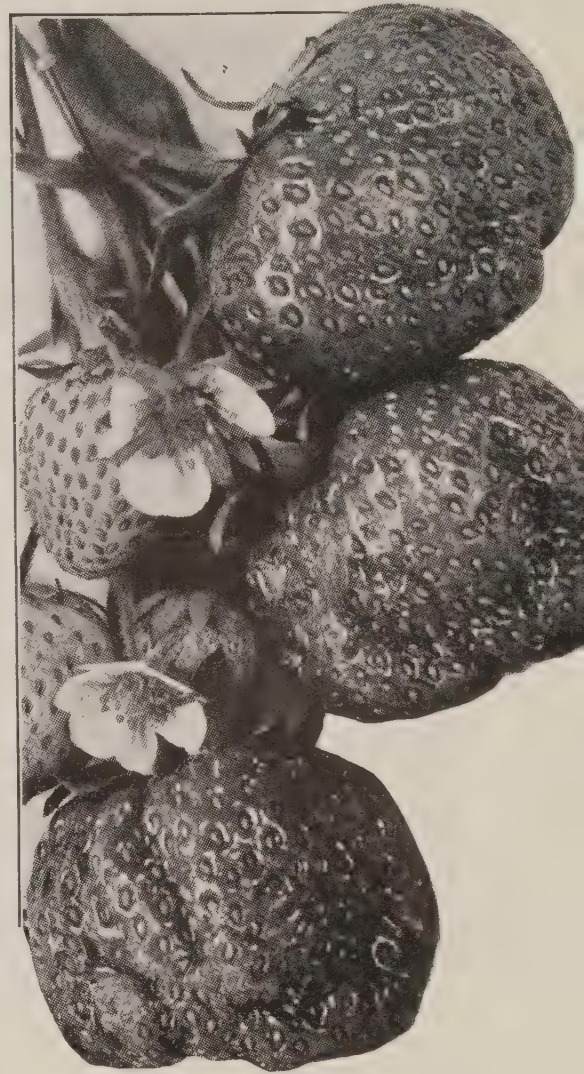
All Prices Subject to Market Changes.

HOW TO PLANT GRAPES

Dig the hole as broad and deep as if a 3-year Apple tree were to be planted. Fill the hole up to the right depth for planting with compost or rich soil. A few old bones in the bottom of the hole will make rich feeding for the vines later on. Trim the roots slightly and cut back the top to three or four strong buds. Use rich soil around roots. Always plant firmly. Leave a mulch of straw manure over plant.



Plant orders amounting to \$2.50 or more, no packing charge. Orders less than \$2.50, please add 25c packing charge.



HEDGE PLANTS

BERBERIS THUNBERGI

(Barberry)

A good hardy plant of low, dense growth. It is a brilliant light green from early spring to winter. In autumn the foliage is a bright crimson.

	Doz.
15 to 18 in. plants	\$7.50
18 to 24 in. plants	8.50

NEW RED-LEAVED BARBERRY

The foliage of this new variety is of a rich, lustrous, bronzy red. All that is required to develop its brilliant coloring at all seasons is that it be planted in full exposure to the sun.

	Doz.
Strong, 15 to 18 in. plants	\$ 8.50
18 to 24 in. plants	10.00

California Privet

This most popular of all hedge plants should be set 1 foot apart in double rows in zig-zag fashion, so that the plants are diagonally opposite each other. This practically places them 6 inches apart, which is desirable to get a quick, dense growth. Plant from October 15th till the ground freezes, and from March 15th to May 15th.

	Doz.	50	100
1½ to 2 feet	\$2.50	\$ 9.50	\$16.00
2½ to 3 feet	3.50	13.00	24.00
3 to 4 feet	5.00	18.00	35.00

(Special quotations on 1000 lots.)

Privet plants are best shipped by express.

YOUR LAWN

The Basis for an Attractive Home
Assure Pride and Satisfaction With Michell Seed Mixtures



Send for our FREE booklet, "Lawn Pointers," for suggestions on the care of your lawn

AUTUMN IS IDEAL FOR REBUILDING THE LAWN

The cool, moist weather of late summer and early fall affords an ideal condition for rebuilding a lawn that has suffered from drought, neglect, or the ravages of weeds. Seed sown at this time will show quicker growth and has a tendency to stool or spread out, a condition not present during the warmer months. Competition with weeds is practically eliminated at this season, since the latter are incapable of germination until spring, by which time fall-sown grass is thoroughly established and the weeds have little chance to thrive. Seed may be sown successfully as late as October 15th in the latitude of Philadelphia, but we would recommend the month of September for best results.

Quantity to Sow for Lawns: We recommend sowing 5 pounds per 1000 square feet, 150 pounds per acre on new ground without grass. In renovating established lawns, use half the above quantities.

MICHELL'S GREEN VELVET LAWN SEED

This widely known combination of pure lawn grasses is the result of over 50 years' experience with problems of fine turf, and is recommended by us for the open, sunny lawn, where a closely knit, weed-free turf, of lustrous green, velvety appearance, is desired. Lb., 85c; 3 lbs., \$2.40; 5 lbs., \$3.75; 10 lbs., \$7.00; 25 lbs., \$16.75; 100 lbs., \$65.00.

MICHELL'S TOP-NOTCH LAWN SEED.

A perfectly blended combination of the purest seed most suitable for the establishment of a luxuriant lawn. This formula is recommended to those who seek the ultimate in a lawn mixture. 3 lbs., \$3.15; 5 lbs., \$5.00; 10 lbs., \$9.50; 25 lbs., \$23.00; 100 lbs., \$90.00.

MICHELL'S CLOVER LAWN SEED.

The demand for a grass seed mixture containing an unusually large proportion of White Clover induced us to offer this brand, which is particularly suited to take firm hold and grow quickly on hard or wornout spots. Lb., \$1.10; 3 lbs., \$3.15; 5 lbs., \$5.00; 10 lbs., \$9.50; 25 lbs., \$23.00; 100 lbs., \$90.00.

MICHELL'S FAIRMOUNT PARK LAWN SEED.

A mixture meeting the requirements of those desiring a moderately priced grass seed Lb., 60c; 3 lbs., \$1.65; 5 lbs., \$2.50; 10 lbs., \$4.50; 25 lbs., \$10.50; 100 lbs., \$40.00.

MICHELL'S TERRACE LAWN SEED.

Composed of deep-rooted varieties, adapted to the unusual requirements of the terrace. Lb., 90c; 3 lbs., \$2.60; 5 lbs., \$4.00; 10 lbs., \$7.50; 25 lbs., \$18.00; 100 lbs., \$70.00.

MICHELL'S EVERGREEN LAWN SEED.

Recommended to fill the requirements of the average lawn, this mixture will produce a very desirable turf of fine-bladed, hardy grasses, capable of withstanding considerable wear and periodic dry spells. ½ lb., 40c; 1 lb., 75c; 3 lbs., \$2.20; 5 lbs., \$3.25; 10 lbs., \$6.00; 25 lbs., \$14.50; 100 lbs., \$55.00.

MICHELL'S SEASHORE LAWN SEED.

A very satisfactory mixture for lawns along the coast. Lb., \$1.10; 3 lbs., \$3.15; 5 lbs., \$5.00; 10 lbs., \$9.50; 25 lbs., \$23.00; 100 lbs., \$90.00.

MICHELL'S SUPERIOR BENT GRASS MIXTURE.

Composed chiefly of the leading varieties of Bent Grass, but containing a sufficient percentage of other hardier fine-bladed grasses to produce a lawn of putting-green texture. Lb., \$1.50; 3 lbs., \$4.40; 5 lbs., \$7.00; 10 lbs., \$13.50; 25 lbs., \$32.50; 100 lbs., \$125.00.

WHITE DUTCH LAWN CLOVER.

Excellent for sowing with grass on lawns and other places where a thick, quick growth is desired. Especially adapted for seashore lawns. Oz., 15c; ¼ lb., 40c; ½ lb., 65c; lb., \$1.25; 5 lbs., \$5.65; 10 lbs., \$10.70; 25 lbs., \$25.75; 100 lbs., \$100.00.

MICHELL'S SHADED LAWN SEED

We have combined a mixture of grasses that will produce a perfect sward in heavily shaded places. It should be borne in mind that such locations present problems other than lack of sunlight, and for this reason the soil should be checked for drainage, possible acidity, and low fertility. Lb., 90c; 3 lbs., \$2.60; 5 lbs., \$4.00; 10 lbs., \$7.50; 25 lbs., \$18.00; 100 lbs., \$70.00.

A complete stock of Grasses in separate varieties always in stock. Ask for prices.

MICHELL'S FARM AND GARDEN TOOLS

Durable Quality Tools That Minimize Garden and Farm Labor

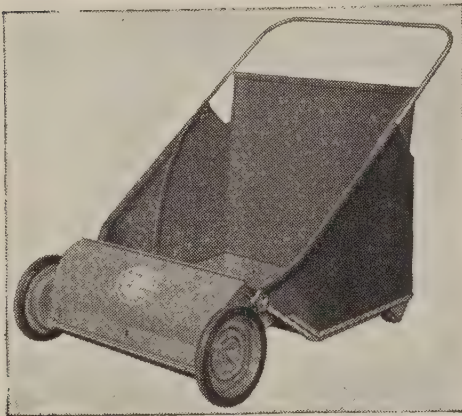
Sudbury Soil-Test Kit

Horticultural Size. Model B. For the advanced amateur, or nurseries, growers, and greenhouses whose requirements do not call for the larger professional equipment. Capacity 200 individual tests. Inexpensive refills available. Price, \$12.50.

Club Model. C. This new model in the famous Sudbury line gives a complete season of soil testing at a far lower price than ever before. Makes 50 individual tests for nitrogen, phosphorus, potash, and acidity, showing how to lime and fertilize for best results. Cased in handsome, sturdy, imitation leather. Price, \$4.75.

Home Gardeners Size. Model D. A 20-test kit. Complete with instructions and data on plant needs. Price, \$2.50.

Springfield Lawn Sweepers



27 in., with semi-pneumatic tires, \$45.00.



Keystone Leaf Rack

This device can be used on wheelbarrows with removable sides. Has a capacity of 10 bushels. Made of galvanized wire, bolted to a wooden base. Price, not including wheelbarrow, \$13.75.

Amepco Hose

Clear amber hose. Kink-proof; crack-proof. Very light, non-soiling and easy to handle. Equipped with machined fittings and guaranteed for five years.

3/4-in., 25-ft. length\$13.75
 3/4-in., 50-ft. length 24.50
 5/8-in., 25-ft. length 6.95
 5/8-in., 50-ft. length 12.95
Green (Guaranteed 2 Years)
 5/8-in. only, 50-ft. length 9.95

Koroseal Plastic Garden Hose Red or Green

Very light in weight. Finished in brilliant red or cool green color. Mirror finish inside and out. Easy to handle; resists oil and grease and is not affected by sunlight. Made by Goodrich.

5/8-in., 25 ft. \$5.25
 5/8-in., 50 ft. 9.70

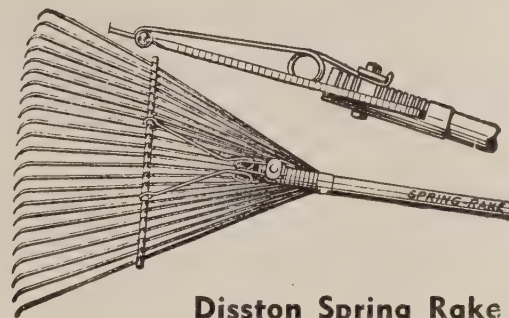
The New Electric Hose

An old-time reliable item now back on the market, formerly called Chicago Electric Hose. A two-braid rayon thread, quite an improvement over the old cotton thread. Can be cut in any length. 3/4-in., 2-braid rayon 30c per ft.



Bamboo Lawn Rakes

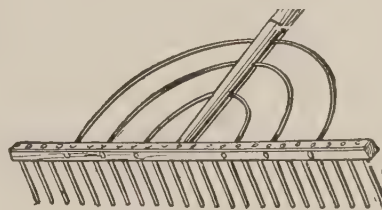
18 in.\$1.75
 24 in. 2.25
 30 in. 2.75



Disston Spring Rake

Ideal for lawns or driveway. Made from spring wire.

18-tooth\$2.00
 24-tooth 2.50



Wooden Rakes

AMES, No. 37X. 28-tooth; width 26 in.; steel bows. Price, \$2.50.

HAND and POWER LAWN MOWERS Pennsylvania Combined Trimmer and Edger

This machine, consisting of the ball-bearing trimmer, equipped with a steel disc and a small plow, will trim the overhanging grass along the edges of paths and flower beds, relieving the gardener of work with hand shears or a grass hook. Cutting width 6 inches. Price, \$19.95.

Pennsylvania Meteor Lawn Mower

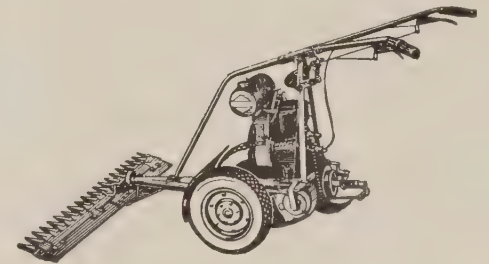
Built of aluminum by Pennsylvania Lawn Mower Co. Weighs only 36 lbs. Quiet and fast. Pushes easily. Equipped with good quality rubber tires. 10-inch wheels, 5 crucible steel blades.

16-inch cut\$30.00
 19-inch cut 31.90

Great American High-Wheel Ball-Bearing Lawn Mowers

This is the best all-around mower of its type made; one of the greatest sellers of all time. It has five extra wide crucible tool steel blades, oil hardened and tempered; lower blade with raised edge. Braun self-aligning ball-bearings, hardened steel cup and cones, eccentric screw adjustment with positive lock; internal gear on each wheel; steel wheel axle screwed and bolted to side plate. Can be regulated to cut grass at a height of from 1/2 to 1 1/2 inches. High wheel, 10 inches in diameter. Rubber tires.

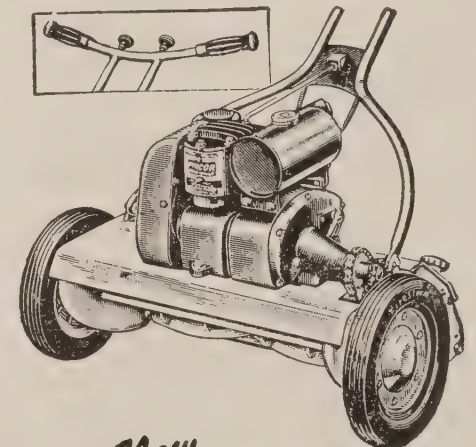
17-inch cut\$27.50
 19-inch cut 30.00



The National Sickle Bar Mower

Cuts weeds and grass whether long or short, on practically all classes of ground—hilly or stony—around trees and shrubbery—on levels or in the rough. Engine drives both cutting and traction, you only steer.

38-inch or 40-inch\$185.00



The New PINCOR POWER MOWER

Precision Built for Homes, Estates and Commercial Users. 20-inch Cut.

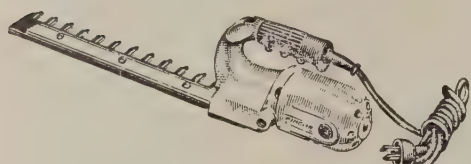
The instant you see the compact, sturdy Pincor Power Mower you'll discover it's new from the ground up. You'll see built-in features that increase operating performance and save you time. You'll step behind a trim, smooth cutting, extra powerful mower, so easy to handle that any member of the family can use it. It's the mower for the home owner proud of his home and for the commercial operator demanding carefree service and dependability. Price, \$155.00.

MICHELL'S FARM AND GARDEN TOOLS

Durable Quality Tools That Minimize Garden and Farm Labor

PINCOR

Electric HEDGE TRIMMER



Eliminates the back-breaking job of hand hedge and shrubbery trimming. Precision built, 13½-in. steel blade, complete with 8-ft. rubber cord and extra handle. Price, \$32.50.

Hedge Shears—American

8 in.	\$3.00
9 in.	3.25
10 in.	3.50



No. 1 Forester Lopping Shears

Forester Lopping Shears

Powerful and ruggedly built shears. Has patented slide-shift power slot.

No. 1. 20 in. long. Capacity 1 3/16 in. Weight 2 lbs. 10 ozs. Price, \$7.50.

No. 2. 27 in. long. Capacity 1½ in. Weight 4 lbs. 10 ozs. Price, \$8.50.

No. 3. 34 in. long. Capacity 2 in. Weight 7 lbs. 4 ozs. Price, \$9.75.



Lopping Shears

No. 7. All-steel blade and arms. Blade 3 in. long; arms 15 in. long. Hardwood handles 8 in. long. Weight 1¼ lbs. Price, \$4.00.

Lopping Shears

Seymour-Smith. Wood handle.

Heavy blades, for large branches:

30-in. handles	\$3.50
22-in. handles	3.00

Light blades for small branches:

30-in. handles	3.00
22-in. handles	2.50

Pruning Shears



	Length	Each
No. 156. Disston	8½ in.	\$3.50
No. 127. Disston	8¼ in.	2.50
No. 143. Disston	9 in.	2.00
No. 227. Disston Superlite.		3.50
No. 403. Heavy Anvil Type.		2.00
No. 4773. American Rieser	9 in.	3.50
No. 4770. Ladies' Type.		
Chromium finish	7 in.	3.50

Bradex English Steel Trowel

No. 645. Made with wood handle, this superior quality trowel is just the tool required for planting. Overall length 12 inches. Price, \$2.00.

Steel Trowels

No. 211. These are made of one-piece steel blade and shank, with wood hand grip.

5 in.	\$1.00
6 in.	1.25

FERTILIZERS AND WEED-KILLERS

Bonemeal

We recommend this especially for lawns, gardens and greenhouses, or any purpose where a high class fertilizer counts. Apply 800 to 1000 pounds per acre. 5 lbs., 55c; 10 lbs., 90c; 25 lbs., \$1.80; 50 lbs., \$3.50; 100 lbs., \$6.00; ½ ton, \$55.00; ton, \$100.00.

Sheep Manure

5 lbs., 50c; 10 lbs., 80c; 25 lbs., \$1.50; 50 lbs., \$2.50; 100 lbs., \$4.50; ½ ton, \$37.50; ton, \$70.00.

Adco Artificial Manure

ADCO is a powder which, when mixed with almost any non-woody vegetable waste and kept moist, converts the mass into real manure. 7½ lbs., \$1.25; 25 lbs., \$2.50; 100-lb. bag, \$9.50; 150 lbs., \$12.00.

Cow or Cattle Manure

Especially suited for soil mixing, mulching and liquid manuring. Apply 1000 pounds per acre. 5 lbs., 50c; 10 lbs., 80c; 25 lbs., \$1.50; 50 lbs., \$2.50; 100 lbs., \$4.50; ½ ton, \$37.50; ton, \$70.00.

Hyper-Humus

Use at the rate of 1 to 4 pounds per square foot.

Prices for bagged material: 5 lbs., 30c; 10 lbs., 50c; 25 lbs., 85c; 50 lbs., \$1.50; 100 lbs., \$2.50; 500 lbs., \$11.25; ½ ton, \$22.00; ton, \$40.00.

In loose bulk: Truckload (minimum 10 tons), \$11.00 per ton, f.o.b. Newton, N. J.

Michell's Lawn Dressing

Michell's Lawn Dressing will induce healthy, vigorous growth, enabling the lawn to better withstand the hardships of winter weather. 5 lbs., 50c; 10 lbs., 85c; 25 lbs., \$1.50; 50 lbs., \$2.50; 100 lbs., \$4.75.

Salt Hay

For protection of plants and shrubs. 25 lbs., \$2.50; 50 lbs., \$4.75; bale (average 140 lbs.), 5c per lb.; ½ ton, \$32.00; ton, \$60.00.

Burlap

40 inches wide 40c per yard

Tree and Shrub Food (Michell's)

Not Used as a Top Dressing

Drill holes in the ground 1½ feet deep and 5 feet away from the trunk, and extend out beyond the line of foliage; fill holes with food and then close. 5 lbs., 50c; 10 lbs., 85c; 25 lbs., \$1.50; 50 lbs., \$2.50; 100 lbs., \$4.50; ½ ton, \$38.50; ton, \$75.00.

Vigoro

5-lb. bag, 45c; 10-lb. bag, 85c; 25-lb. bag, \$1.50; 50-lb. bag, \$2.50; 100-lb. bag, \$4.00.

Wood Ashes

Apply 1000 pounds per acre. For top-dressing lawns and grass. 25 lbs., \$1.25; 50 lbs., \$2.00; 100 lbs., \$3.50; ½ ton, \$25.00; ton, \$45.00.

Agrico

Each kind of plant has its own plant-food needs. That's why there's an Agrico for each different plant-feeding job. One for lawns, trees, and shrubs—another for flowers and vegetables—another for Broadleaf Evergreens. Special purpose Agrico fertilizers go further, do a better job, give you more value per pound and per dollar. In all convenient sizes, complete directions on every bag.

Agrico for Lawns, Trees and Shrubs: 5 lbs., 45c; 10 lbs., 80c; 25 lbs., \$1.50; 50 lbs., \$2.50; 100 lbs., \$4.50.

Agrico for Gardens, Flowers and Vegetables: 5 lbs., 45c; 10 lbs., 80c; 25 lbs., \$1.50; 50 lbs., \$2.25; 100 lbs., \$4.00.

Agrico for Broadleaf Evergreens: 10 lbs., \$1.00; 25 lbs., \$2.00; 50 lbs., \$3.25; 100 lbs., \$5.25.

Peat Moss, Granulated

Large bale	\$3.00
½ bale	3.50
1-bu. bag75

Michigan Peat

Should be incorporated into the soil when possible. Since Michigan Peat is in itself the ideal medium for plant growth, you cannot use too much. Will not burn. Michigan Peat is scientifically prepared, weed free, screened, odorless and ready for use. \$3.50 per 100 lbs.

Michell's Weed Killer

Just the thing for driveways, clay tennis courts, baseball diamonds, drives and walks where you want no weeds.

Weed Killer cannot be used in the garden, flower beds or on the lawn where you want to grow plants and grass.

One gallon will cover 150 sq. yds.; can be applied any time.

Qt., 70c; gal., \$1.50; 5 gals., \$6.50; 30 gals., \$32.00; 55 gals., \$50.00. \$4.00 returnable drum charge.

WEEDONE

Weedone is recommended for killing poison ivy, poison oak, bindweed or wild morning glory, Japanese honeysuckle, sassafras, black locust, and wild or choke cherry. 6-oz. bottle, 75c; 1-qt. bottle, \$2.50; 1-gal. bottle, \$7.50; 5 gals., \$25.00.

Tat C - Lect

Kills crabgrass in all stages—seeds, seedlings, mature plants. Perfectly safe to use on lawns, for it does not burn the grass. 8-oz. bottle, 85c; 16-oz. bottle, \$1.50; gal., \$9.75.

Alfco Crabgrass Killer

A new discovery that effectively kills crabgrass and weeds in the lawn without destroying permanent lawn grasses. Sprayed on infested areas during September, Alfco will destroy both the plant and the seeds, checking reinfestation next year. One pound will treat 2000 to 4000 sq. ft. 8 ozs., \$1.00; lb., \$1.50; 2 lbs., \$2.50; 10 lbs., \$8.00.

2 New Cluster Type Floribunda ROSES

These two novelties bid fair to become profitable additions to the none too long list of Roses of modern times.

They are a distinctive new type, and in order to distinguish them from the ordinary small-flowered Polyanthas or the larger flowered Floribunda class, we have decided to utilize the designation of "Rosette" for this class, i.e., "Pink Rosette" and "Crimson Rosette."

The blossoms as shown in the color plates are truly representative of the type—dainty camellia-formed flowers of even and regular outline.



Pink Rosette. Links the glamour and beauty of the present with the style and charm of the past. The open sprays bearing many pure peach-pink buds with fifty or more shell-like petals, are stream-lined and unfold to open flowers of perfect proportion and form. Yet for all its up-to-the-minute newness there is about the Rose an indefinable quality that connects Pink Rosette with the quaint style, primness and beauty of Colonial times.

\$2.00 each; 3 for \$5.50

Crimson Rosette. Clusters of brilliant red Roses cover the dark green, heavily foliated bushes in a continuous display of velvety red. The medium-sized, fifty-petaled buds expand slowly, finally culminating in open flowers of vivid crimson. Every flower in the spray is an exquisitely formed red plush rosette. The rugged growth accounts for the tremendous quantities of flowers produced.

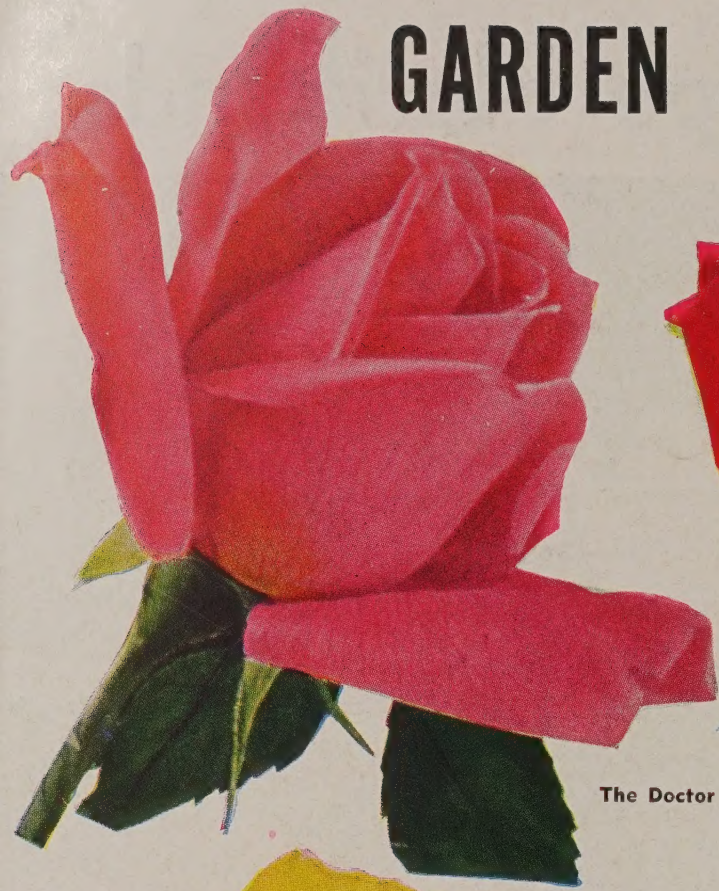
\$2.00 each; 3 for \$5.50

GARDEN SPLENDOR ROSE GROUP

Everblooming
Roses

as
Illustrated

6 Roses for \$7.50



The Doctor



Christopher Stone

Selected 2-Year Bushes.
Plant This Fall.



Golden Sastago



President Hoover



Poinsettia



K. A. Victoria

HENRY F. MICHELL CO.
Bulbs - Seeds - Plants
516-518 Market St., Philadelphia, Pa.